



COMPANY PROFILE & CATALOG

The World of Plumbing
Complements Your Needs



PT. EXCELINDO ADHI PRATAMA

Jl. Hayam Wuruk Raya No.11a, RT.001/RW.002, Cibodas, Kec. Cibodas, Kota Tangerang, Banten 15138.
Telp. 021-5566 8582

COMPANY PROFILE

EXCELINDO ADHI PRATAMA (DUNIA PLUMBING)

Adalah Perusahaan yang bergerak dibidang Kontraktor & Supplier, yang telah terpercaya untuk memenuhi kebutuhan para konsumen dengan tingkat kepuasan penuh.

Excelindo Adhi Pratama sudah terbukti terpercaya, telah mampu memberikan kepuasan bagi para konsumen, yang sudah bertahun - tahun memberikan kontribusi pelayanan jasa instalasi maupun supply product – productnya ke berbagai Instansi Pemerintah maupun Swasta diberbagai daerah di Indonesia.

PRODUCT YANG KAMI SUPPLY

1. Pipa (HDPE, Subduct, MDPE, PVC/uPVC, Conduit, PPR, Corrugated, Spiral, Galvanis, Black Steel, Stainless)
2. Fittings & Valve (HDPE, PVC, PPR, Brass, Cast Iron, Ductile Iron, Stainless)
3. Accessories Jaringan Air (Water Meter, Dresser Joint, Dismantling Joint, Flexible Joint, Flange, Tee All Flange, Flange Socket, Kubus Apung, Box Meter (Flow Meter), Sambungan Rumah (SR), Welding Machine HDPE, dll)
4. Alat Pemadam Kebakaran , Pompa, Hydrant Box, Hydrant Pilar.
5. Solar Cell (Panel Surya), Cable Tray, Duct, Ladder, Inverter.
6. Compressor & Pump

JASA INSTALASI

- Kami Sudah Berpengalaman Dalam Bidang Penyambungan Pipa HDPE Khususnya
- Memiliki SDM yang berpengalaman dan berkualitas di bidangnya yang sudah dibekali training menurut Standar SOP Dunia Plumbing
- Memiliki Machine Welding & peralatan yang lengkap untuk Mendukung Khususnya pada Penyambungan Pipa HDPE
- Semua ManPower Sudah Melakukan Test Kesehatan, dan dilengkapi Alat Pelindung Diri (APD) yang sudah memenuhi Standar SOP sesuai yang di terapkan pada K3.

JASA INSTALASI

1. Jasa Penyambungan Pipa (HDPE, MDPE, PVC, PPR, Galvanis, Black Steel)
2. Jasa Installasi Rumah Pompa Hydrant
3. Jasa Rangkai Sambungan Rumah (SR)
4. Jasa Purgung & Hydro Test
5. Jasa Service Inverter
6. Jasa Pemasangan/Rangkai Solar Cell (Panel Surya)
7. Service Compressor & Pump
8. Jasa Installasi Penyambungan Pipa (HDPE, PPR, PVC & Steel)
9. Jasa Service Inverter
10. Jasa Hydro Test (Test Tekanan Pipa) > Media (Air/Udara)
11. Jasa Senai / Senai Pipa (Pembuatan Drat)
12. Jasa Rangkai Sabungan Rumah (SR)

LAYANAN PERMOHONAN PENAWARAN HARGA

Dengan Memberikan Informasi sbb :

1. NAMA PEMOHON (Penawaran Harga)
2. JABATAN / BAGIAN
3. NAMA PERUSAHAAN
4. MELAMPIRKAN BOQ / RAB Atau dengan memberikan informasi barang kebutuhannya :
 - Nama Barang
 - Size / Type
 - Quantity (Jumlah Barang)

KHUSUS LAYANAN PERMOHONAN PENAWARAN HARGA JASA INSTALLASI

Dengan Memberikan Informasi sbb :

1. NAMA PEMOHON (Penawaran Harga)
2. JABATAN/ / BAGIAN
3. NAMA PERUSAHAAN
4. MELAMPIRKAN BOQ / RAB Atau dengan memberikan informasi barang kebutuhannya :
 - Nama Barang
 - Size / Type
 - Quantity (Jumlah Barang)
5. Wajib Dilakukannya survey kelokasi pemasangan, agar mengetahui medan untuk menghitung tingkat kesulitan pada saat Installasi.

PROJECT REFERENSI

INSTALASI & SUPPLY PRODUCT

- Dinas PU CIPTA KARYA > Project SPAM Brebes, Jawa Tengah 2018
- Dinas BBWS > Project RESEVOIR Semarang 2018
- PT. PETRO KIMIA GRESIK, Project Kimia Fluide Jawa Timur 2018
- PDAM > Project Air Bersih, Simalungun – Sumatera Utara 2018
- Dinas Perkim BINTAN > Project SPAM BINTAN, Kepulauan Riau (2018)
- PDAM Way Rilaw > Project Jaringan Air Bersih, Kota Bandar Lampung (2018)
- Dinas PU & BMCK > Project SPAM Purworejo, Jawa Tengah 2019
- Dinas Cipta Karya > Project SPAM Pekan Baru 2019
- Dinas Perkim > Project SPAM Magelang, Jawa Tengah 2019
- PT. Utama Karya > Project Bendungan Penanggulangan Bencana, Dompu - NTB (2020)
- Dinas Perkebunan > Project Perkebunan Teh & Perkebunan Kopi, Pangalengan – Jawa Barat (2022)
- Dinas Perhutani > Project Drainase / Irigasi (Surabaya)
- Dinas PU > Project Jaringan Air Bersih, Pontianak Kalimantan Barat (2021)
- PDAB > Project Spam Jawa Tengah (2020 – 2021)
- PDAM > Project Air Bersih > Sidoarjo, Jawa Timur (2021)
- PERKEBUNAN > Serang, BANTEN (2021)
- PDAM > Project Jaringan Air Bersih Kota Bengkulu (2021)
- PERUMDA > Project Jaringan Air Bersih Kalimantan Selatan (2020)
- Dinas PU > Project Air Bersih > Sorong, Papua (2021)
- PT.KRAKATAU STEEL > PPR Cilegon, Banten (2022)
- DINAS PEMMERINTAH KOTA BEKASI, BIOGAS Bantar Gebang, Bekasi (2022)
- PT.TELKOM > Project Fiber Optic > Makassar, Sulawesi Selatan (2022)
- Dinas PEMDA > Project SR, Seluma - Bengkulu Selatan (2022)
- Project Industry Kimia > PPR Manado, Sulawesi Utara (2022)
- Pesantren ECO II (Darul Tauhid) – Project Drainase, Bandung - Jawa Barat (2022)
- RSUD Balaraja > Project Rumah Pompa Hydran – BANTEN (2022)
- ETC

STRUKTUR ORGANISASI

NAMA PERUSAHAAN : PT. EXCELINDO ADHI PRATAMA
BRAND : DUNIA PLUMBING
ALAMAT : JL. Hayam Wuruk Raya No.11 A, Cibodas, Tangerang, Banten, 15138.
TELP (OFFICE) : (021) 55668582

VISI : Menjadi Salah Satu Perusahaan Besar di Indonesia yang Terpercaya dan Mengutamakan Pelayanan Terbaik.

MISI : Menjadi Perusahaan Yang dapat memberikan pelayanan dengan tingkat Kepuasan Penuh, Terpercaya, dan dapat Memberi Suatu Perubahan Kemajuan menyeluruh pada kalangan, Industry, Instansi Pemerintah, Maupun Instansi Swasta di berbagai daerah.

SLOGAN : The World of Plumbing Complements Your Needs

LOGO :



SERTIFIKAT

- SERTIFIKAT K3 UMUM
- SERTIFIKAT Instalasi (Solusi Antisipasi Human Error pada penyambungan pipa HDPE)
- SERTIFIKAT SNI PRODUCT (Pipa HDPE/PVC/PPR/ Steel)
- SERTIFIKAT Full Grade Product (Pipa HDPE/PVC/PPR/ Steel)
- SERTIFIKAT KALIBRASI/TERA (Water Meter/ Flow Meter)

MATERIAL PRODUCT

PIPA

- Pipa HDPE PE 100 (Solid)
 - Pipa HDPE Subduct (Fiber Optic)
 - Pipa HDPE Corrugated
 - Pipa MDPE (For GAS)
 - Pipa PPR (Cool, Fluide, Hot)
 - Pipa PVC / uPVC (SNI & JIS)
 - Pipa PVC Limbah SDR 41
 - Pipa Conduit PVC
 - Pipa Galvanized (GIP)
 - Pipa Carbon Steel/Black Steel (BS/CS)
 - Pipa Schedule (SCH)
 - Pipa Stainless Steel (SS)
 - Pipa Welded
- > Air Bersih
 - > Selongsong Cable (Fiber Optic)
 - > Drainase Resapan Air & Selongsong Cable
 - > Gas, PGN, LNG, LPG (Migas)
 - > Air Dingin, Cairan Kimia, & Air Panas
 - > Air Bersih
 - > Air Kotor / Air Limbah
 - > Installasi Cable Listrik
 - > Air Bersih
 - > Air Bersih / Gas
 - > Air Bersih / Gas
 - > Tiang Pancang / Tiang Jembatan
 - > Air Bersih / Oil & Gas
 - > Air Bersih / Oil & Gas

FITTINGS

v Fittings HDPE

- Fittings Compress HDPE
- Fittings Push on / Push Fit HDPE
- Fittings Butt Fusion Welding HDPE
- Fittings Electrofusion HDPE

v Fittings PVC/uPVC

- Fittings PVC SCJ (MOF) – Solvent Cement Joint
- Fittings PVC RRJ - Rubber Ring Joint

v Fittings PPR

v Fittings Steel

- Fittings GIP (Galvanized)
- Fittings SGP (Steel Galvanized Pipe)
- Fittings SCH (Steel Carbon High)
- Fittings Stainless Steel (SS)

MATERIAL PRODUCT

VALVE

- VALVE HDPE
- VALVE PVC / uPVC
- VALVE PPR
- VALVE BRASS (Kuningan)
- VALVE Bronze (Perunggu)
- VALVE Cast Iron (CI)
- VALVE Ductile Iron (DCI)
- VALVE Stainless Steel (SS)

FLANGE

- Flange Steel
- Flange HDPE
- Flange Adaptor HDPE
- Flange PVC
- Flange Socket (PVC/CI/DCI)
- Flange Spigot (PVC/CI/DCI)
- Blind Flange (PVC/CI/DCI)
- BEND ALL FLANGE (PVC/CI/DCI)
- TEE ALL FLANGE (PVC/CI/DCI)

ACCESSORIES

- WATER METER / FLOW METER
- BOX METER
- DRESSERT JOINT (CI/DCI)
- DISMANTLING JOINT (CI/DCI)
- BEND 90°, 45°, 22.5° (HDPE/PVC/CI/DCI)
- BOX STREET (STREET BOX) > RUMAH VALVE
- PRESSURE GAUGE
- REPAIR CLAMP (CI/SS)

WATER METER / FLOW METER

- Water Meter Brass (Kuningan)
- Water Meter HDPE /PVC
- Water Meter Plastic
- Flow Meter Type Flange

WELDING MACHINE > BUTT FUSION HDPE/PPR

- WELDING MACHINE – For PPR (Type Hand)
- WELDING MACHINE HDPE – TYPE MANUAL
- WELDING MACHINE HDPE – HYDROLIC

PAKET SAMBUNGAN RUMAH (SR)

- SAMBUNGAN RUMAH (SR) HDPE
- SAMBUNGAN RUMAH (SR) PVC
- SAMBUNGAN RUMAH (SR) GALVANIS
- SAMBUNGAN RUMAH KOMBINASI

- KUBUS APUNG (V-FLOAT)
- TANDON / TANGKI TOREN
- SCREEN PIPA (PIPA FILTER)

PUMP (POMPA)

- CENTRIFUGAL PUMP
- HYDROLIC PUMP
- ROTARI PUMP
- BOOSTER PUMP

ELECTRICAL

- INVERTER
- SOLAR CEL (PANEL SURYA)
- CABLE

HYDRANT

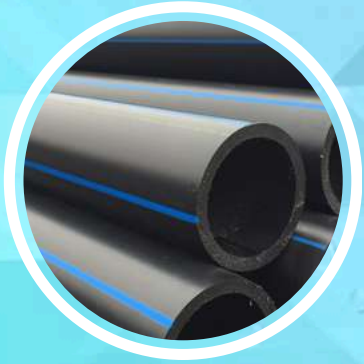
- FIRE HOSE
- HYDRANT BOX
- HYDRANT PILAR (One Way / Two Way)
- HYDRANT VALVE
- NOZZLE
- TABUNG APAR
- POWDER / FLUIDE

STANDAR PRODUCT

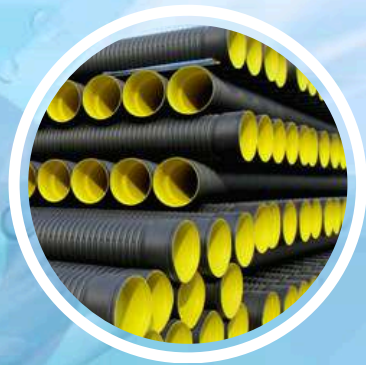
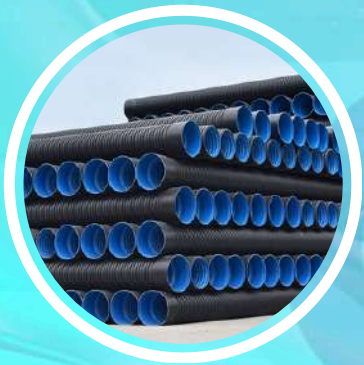
- SNI (Standar Nasional Indonesia)
- JIS (Japanese Industrial Standar)
- ANSI (American National Standart Institute)
- API (American Petroleum Institute) > Industry Oil & Gas
- ASTM (American Society For Testing Materials)
- ASME (American Society of Mechanical Engineers)
- DIN (Deutches Institut Fur Normong) > German
- BS (British Standars) > Negara Inggris

DUNIAPLUMBING

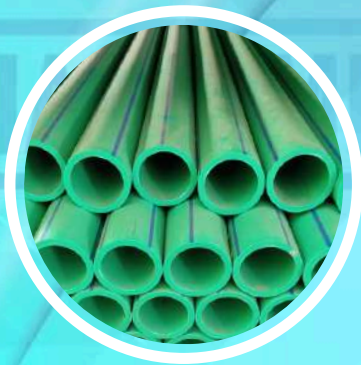
- **HDPE PIPE**



- **CORRUGATED PIPE**



- **PPR PIPE**



- **UPVC PIPE**



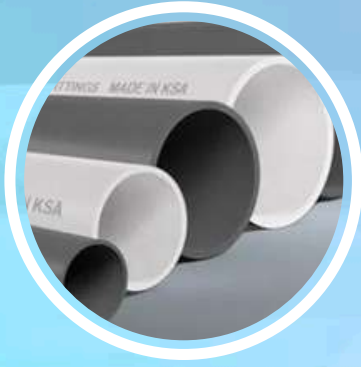
- **MDPE PIPE**



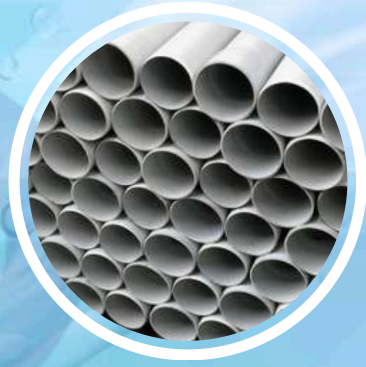
- **SUBDUCT PIPE**



- **PVC PIPE (AW)**



- **PVC PIPE (D)**



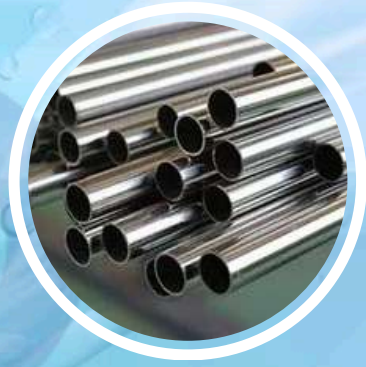
- **PVC PIPE (SNI)**



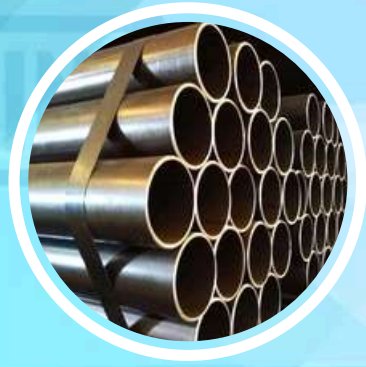
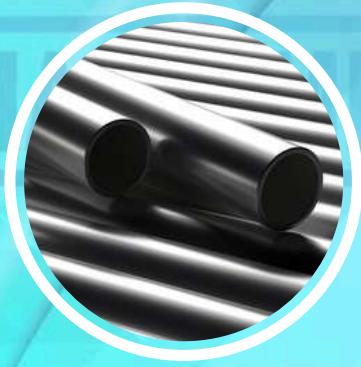
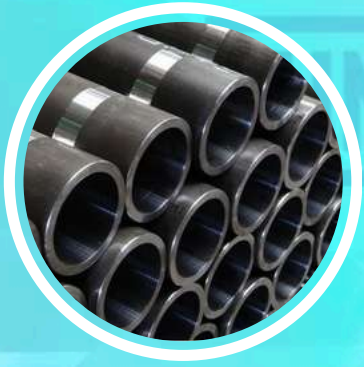
- **GALVANIZED PIPE**



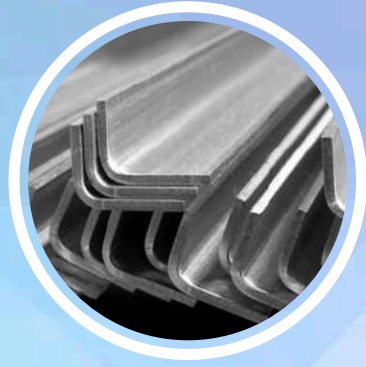
- **STAINLESS STEEL PIPE**



- **CARBON STEEL PIPE/BLACK STEEL PIPE**



- **BESI HOLLOW-BESI UNP-BESI SIKU**



- **ARMCO**



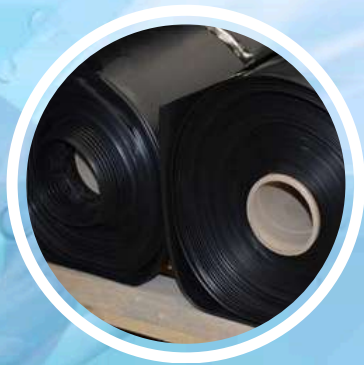
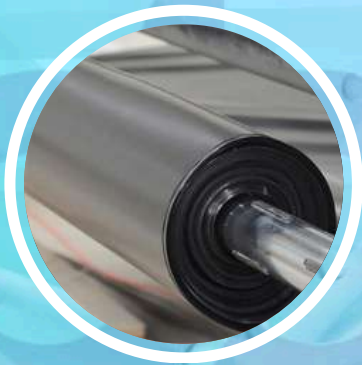
- **NESTABLE FLANGE**



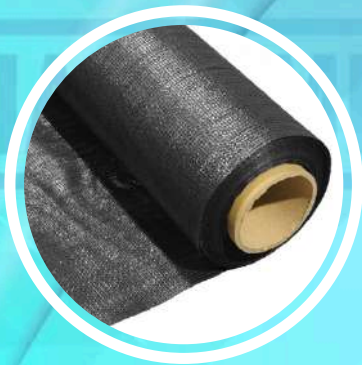
- **ROCKWOOL PIPE**



- **GEOMEMBRANE HDPE**



- **GEOTEXTILE WOVEN & NON WOVEN**



• **PVC FITTINGS**



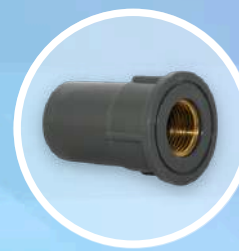
SOCKET (AW)



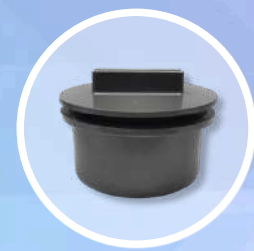
**FAUCET
SOCKET (AW)**



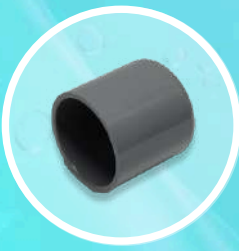
**VALVE
SOCKET (AW)**



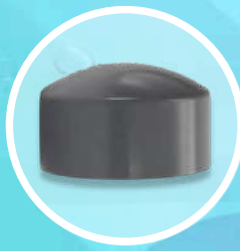
**FAUCET
SOCKET (AW)
with metal insert**



CLEAN OUT (D)



CAP (AW)



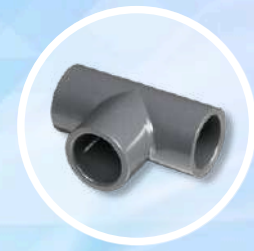
CAP (D)



INCREASER (D)



REDUCER (AW)



TEE (AW)



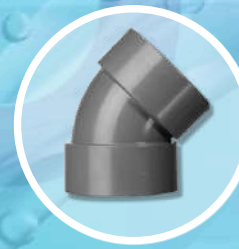
TEE (D)



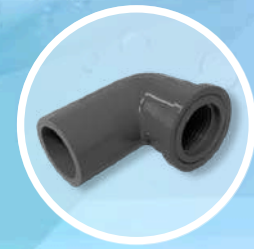
**REDUCER
TEE (AW)**



**FAUCET
TEE (AW)**



45° ELBOW (D)



**FAUCET
ELBOW (AW)**



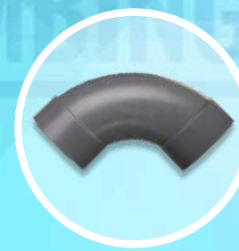
Y-BRANCH (D)



**LARGE
RADIUS TEE (D)**



**LARGE
RADIUS DOUBLE
TEE (AW)**



**LARGE
RADIUS
ELBOW (AW)**



ELBOW (D)

• **PVC FITTINGS & PVC VALVE**



45° ELBOW (AW)



90° ELBOW (AW)



**UNION
SOCKET (AW)**



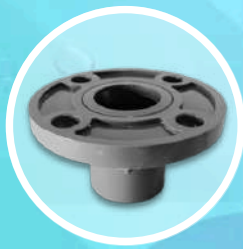
**FAUCET
ELBOW (AW)
with metal insert**



**UNION
THREAD (AW)**



PLUG (AW)



FLANGE (AW)



P-TRAP (D)



**DOUBLE
NIPPLE (AW)**



**FOOT VALVE
SOCKET (AW)**



**SWING CHECK
FLANGE END (AW)**



**SWING CHECK
VALVE (AW)**



**SWING FOOT
VALVE FLANGE
END (AW)**



**BUTTERFLY
VALVE**



**DOUBLE UNION
BALL VALVE**



**BALL VALVE
SOCKET**



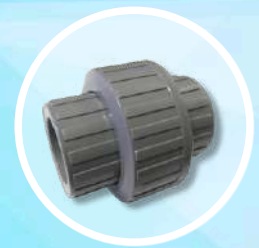
WATER MOOR



PVAG/PVBG



PVCBV



WATER MOOR

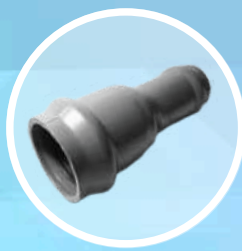
• **RUBBER RING JOINT & SOLVECEMENT JOINT**



**REPAIR
SOCKET RRJ (SNI)**



**SOCKET
RRJ (SNI)**



**REDUCER
SOCKET RRJ (SNI)**



**REDUCER TEE
RRJ (SNI)**



**EQUAL
TEE RRJ (SNI)**



**LONG BEND
SOCKET RRJ (SNI)**



**FLANGE
SOCKET RRJ (SNI)**



**90° ELBOW
KNEE RRJ (SNI)**



**45° ELBOW
KNEE RRJ (SNI)**



**END CAP
RRJ (SNI)**



**VALVE
SOCKET RRJ (SNI)**



**FLANGE ADAPTOR
RRJ (SNI)**



**BEND SPIGOT
RRJ (SNI)**



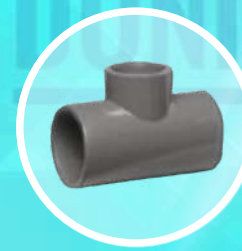
**BEND ALL
RRJ (SNI)**



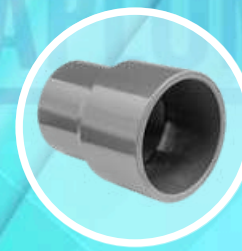
**RUBBERING DUO
(SNI)**



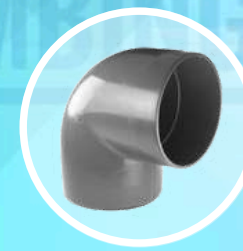
TEE SCJ (SNI)



**REDUCER
TEE SCJ (SNI)**



**REDUCER SOCKET
SCJ (SNI)**



**ELBOW
SCJ (SNI)**



**FAUCET SOCKET
SCJ (SNI)**



**FAUCET ELBOW
SCJ (SNI)**



**SOCKET
RRJ (SNI)**



**FLANGE
SPIGOT SCJ (SNI)**



**CLAMP
SADDLE (AW)**



**BEND ALL
SOCKET SCJ (SNI)**

• UPVC FITTINGS



45° ELBOW



REDUCER



Y-BRANCH



TEE WYE



SOCKET



90° ELBOW



**REPAIR
COUPLING**



**REGISTER
COUPLING**



SOCKET PLUG



CAP



**FLOOR GULLY
TWO SIDE
RUBBER**



P-TRAP



30° BEND



**GULLY
TRAP**



**GULLY
ADAPTOR**



15° BEND



FLOOR GULLY
STEEL COVER



RETURN
VALVE



ACCESS BEND



FLOOR GULLY
TWO SIDE
SOLVENT



45° DOUBLE
BRANCH



DOUBLE
BRANCH

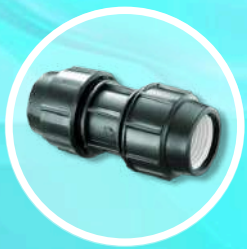


ACCESS PIPE



WASTE
ADAPTOR

• COMPRESSION FITTINGS



COUPLER



SOCKET



MALE
ADAPTOR



FEMALE
ADAPTOR



CLAMP
SADDLE



REDUCER



TEE
THREAD MALE



TEE
THREAD FEMALE



TEE
COUPLER



90° ELBOW



CAP



**MALE
ELBOW**



**FEMALE
ELBOW**



**FLANGE
ADAPTOR**



**FERRULE
CUTTER**



**DOUBLE
NIPPLE**



**REDUCER
NIPPLE**



PP BUSH



**EMERGENCY
REPAIR**



**BALL
VALVE**



**MALE UNION
BALL VALVE**



**FEMALE UNION
BALL VALVE**



**COUPLING
SADDLE**



**BALL VALVE
F/F**



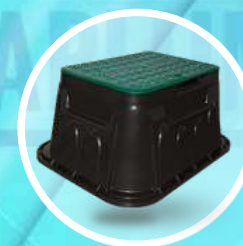
**6" CIRCULAR
VALVE BOX**



**10" CIRCULAR
VALVE BOX**



**12" STANDARD
VALVE BOX**



**14" STANDARD
VALVE BOX**

• ELECTROFUSION FITTINGS



90° ELBOW



45° ELBOW



COUPLER



EQUAL
TEE



REDUCER
TEE



STUB END



END CAP



REDUCER



CLAMP
SADDLE

• PUSH ON FITTINGS



90° MALE
ELBOW



90° FEMALE
ELBOW



MALE
ADAPTOR



FEMALE
ADAPTOR



REDUCER

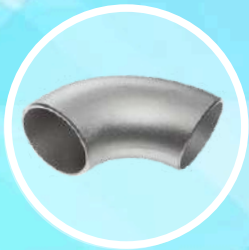


90° ELBOW



TEE

• **BUTT WELDING FITTINGS - STAINLESS STEEL SEAMLESS**



**90° LONG
RADIUS ELBOW**



**45° LONG
RADIUS ELBOW**



CAP



TEE



**REDUCER
TEE**



**REDUCER
CONCENTRIC**



**REDUCER
ECCENTRIC**

• **BUTT WELDING FITTINGS - CARBON STEEL**



**180° LONG
RADIUS ELBOW**



**90° LONG
RADIUS ELBOW**



**45° LONG
RADIUS ELBOW**



**45° SHORT
RADIUS ELBOW**



CAP



**REDUCER
CONCENTRIC**



**REDUCER
ECCENTRIC**



**REDUCER
TEE**



TEE

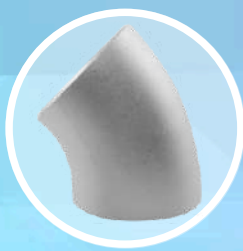
• **BUTT WELDING FITTINGS - GALVANIZED**



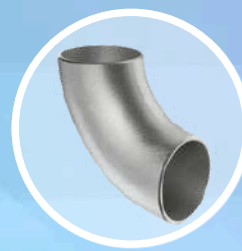
**180° LONG
RADIUS ELBOW**



**90° LONG
RADIUS ELBOW**



**45° LONG
RADIUS ELBOW**



**90° SHORT
RADIUS ELBOW**



**45° SHORT
RADIUS ELBOW**



CAP



TEE



**REDUCER
TEE**



**REDUCER
CONCENTRIC**



**REDUCER
ECCENTRIC**

• **BUTT FUSION FITTINGS**



**STUB END
(INJECTION)**



**STUB END SHORT
(FABRICATED)**



**STUB END LONG
(FABRICATED)**



**FLANGE LONG NECK
(FABRICATED)**



**COUPLER
(FABRICATED)**



GASKET



**CAP
(FABRICATED)**



**BACKING RING
FLANGE
(JIS, PN, ANSI)**



**BACKING RING
FLANGE
(HDPE)**



BOLT & NUT



BLIND FLANGE



BLIND FLANGE (HDPE)



DRESSER JOINT (FABRICATED)



DRESSER JOINT LONG (FABRICATED)



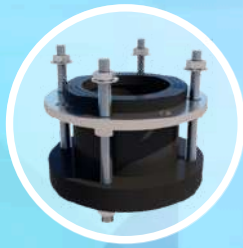
FLANGE ADAPTOR (FABRICATED)



STEEL FLANGE ADAPTOR (FABRICATED)



DISMANTLING JOINT FLANGE (FABRICATED)



DISMANTLING JOINT STEEL FLANGE



SPOOLS (FABRICATED)



EXTENDED FLANGE (FABRICATED)



OFFSETS (FABRICATED)



90° ELBOW (INJECTION)



45° ELBOW (INJECTION)



90° ELBOW (SEGMENTED)



45° ELBOW (SEGMENTED)



90° SWEEP BAND (FABRICATED)



45° SWEEP BAND (FABRICATED)



90° ELBOW (FABRICATED)



45° ELBOW (FABRICATED)



90° ELBOW ALL FLANGE (INJECTION)



**45° ELBOW
ALL FLANGE
(INJECTION)**



**90° SWEEP BAND
ALL FLANGE
(FABRICATED)**



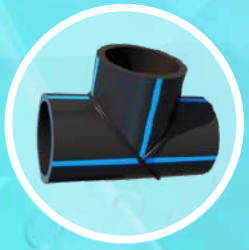
**45° SWEEP BAND
ALL FLANGE
(FABRICATED)**



**TEE
(INJECTION)**



**CROSS TEE
(INJECTION)**



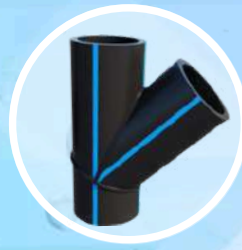
**TEE
(SEGMENTED)**



**CROSS TEE
(SEGMENTED)**



**TRUE Y
(SEGMENTED)**



**TEE Y
(SEGMENTED)**



**TEE
(FABRICATED)**



**REDUCER TEE
(FABRICATED)**



**TEE ALL
FLANGE
(FABRICATED)**



**REDUCER TEE
(SEGMENTED)**



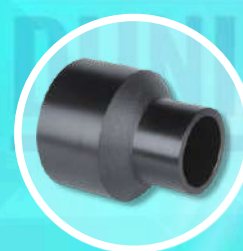
**REDUCER
CROSS TEE
(SEGMENTED)**



**REDUCER TEE Y
(SEGMENTED)**



**REDUCER TEE
(FORGED)**



**REDUCER
(FABRICATED)**



**FLEXIBLE
JOINT SINGLE**

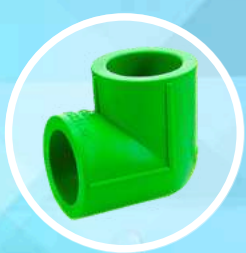


**FLEXIBLE
JOINT DOUBLE**

• PPR FITTINGS



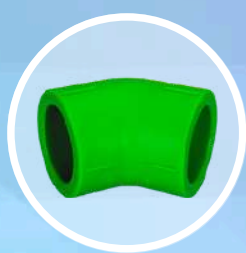
SOCKET



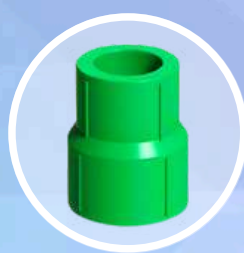
90° ELBOW



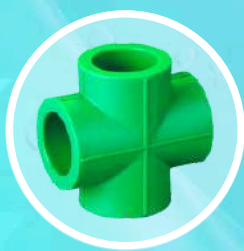
TEE



45° ELBOW



REDUCER



CROSS TEE



END CAP



UNION



REDUCER
ELBOW



PIPE CLAMP



MALE
THREAD



FEMALE
THREAD



MALE
UNION



FEMALE
UNION



MALE
THREADED TEE



FEMALE
THREADED TEE



MALE
ELBOW W/10



FEMALE
ELBOW W/10

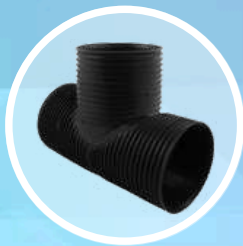
• SPIRAL & CORRUGATED



COUPLER



90° ELBOW
DOUBLE WALL



DOUBLE
WALL TEE



DOUBLE WALL
CROSS TEE



END CAP



BRANCH



RUBBER RING



SOLID WALL
COUPLER



SPACER

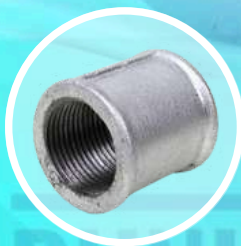


FLAP GATE

• GALVANIZED FITTINGS



LONG BOCH



SOCKET



REDUCER
TEE



90° KNEE



WATER MOOR



DOUBLE
NIPPLE



45° KNEE



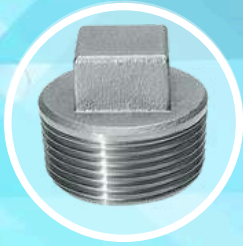
TEE



DOP



REDUCER
SOCKET



PLUG



**REDUCER
KNEE**



CROSS



**CLAMP
SADDLE**

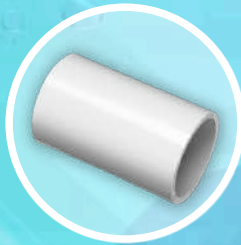


VERLOCK

• **CONDUIT FITTINGS**



**MALE
ADAPTOR**



COUPLING



**U STYLE
CLAMP**



CLAMP



**FLEXIBLE
COUPLING**



**WAY
TERMINAL BOX**



**WAY
ANGLE BOX**



**WAY
THROUGH BOX**



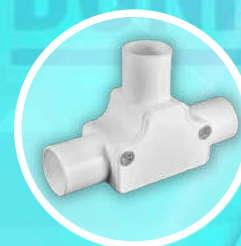
**WAY
TEE BOX**



**WAY
CROSS BOX**



**ELBOW
WITH COVER**



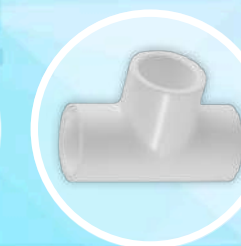
**TEE
WITH COVER**



90° ELBOW



**90° LONG
SWEEP BAND**



TEE



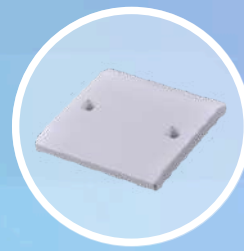
**GANG BOX
(SURFACE
INSTALLATION)**



**DEEP GANG BOX
(CONCEALED
INSTALLATION)**



**GANG BOX
(CONCEALED
INSTALLATION)**



**GANG BOX
COVER**



**BENDING
SPRING**

• VALVE



**RESSILIANT
GET VALVE**



**SINGLE AIR
VALVE**



**DOUBLE AIR
VALVE**



**SINGLE AIR
VALVE**



**SINGLE AIR
VALVE 1"**



**DOUBLE AIR
VALVE
WITH PISTON**



**RESSILIANT
CHECK VALVE**



**DISMANTLING
JOINT**



BEND FLANGE



**FLANGE
SOCKET**



**WAFER CHECK
VALVE**



**FLANGE
ADAPTOR**



**METAL SEATED
GATE VALVE**



**GLOBE
VALVE**



BOX STREET



BUTTERFLY VALVE



GATE VALVE



SWING CHECK VALVE



BUTTERFLY VALVE GEAR



BUTTERFLY VALVE DOUBLE FLANGE



RESSILIAN PORTABLE WATER



DRESSER JOINT



TEE ALL FLANGE



GATE VALVE CI (RISING SYSTEM)



GREY CI GATE VALVE



Y-STRAINER CI



SWING CHECK VALVE CI



GATE VALVE CI (NON RISING SYSTEM)



GLOBE VALVE CI



CHECK VALVE CI

• **BRASS VALVE**



CHECK VALVE



BALL VALVE



ZINC BIBCOCK



TUSEN KLEP



FILTER



BRASS TUSEN KLEP



GATE VALVE



BRASS BIBCOCK



PLUG KRANT



LOCKABLE ANGLE



LOCKABLE ANGLE MAGNETIC



LOCKABLE STRAIGHT MAGNETIC



LOCKABLE ANGLE COMPRESS MAGNETIC



LOCKABLE STRAIGHT COMPRESS



LOCKABLE STRAIGHT COMPRESS MAGNETIC



MALE X FEMALE BALL VALVE



LOCKABLE STRAIGHT MAGNETING COUPLING

• **BOLT & NUT**



A325



BAUT L 88/10.9/12.9



OMEGA CLAMP



ANCHOR BOLT



BUTTON HEAD



BML



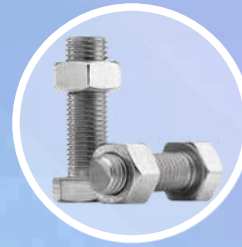
**CLAMP
SLING**



**CLAMP
SELANG**



**DRESSER
JOINT LONG**



**BM SuS
304/316**



EYE NUT



EYE BOLT



FISCHER



WAFFER HEAD



**CARBON STEEL
HOT DIP**



**HANGER
CLAMP**



JF



JP



**VERSING
L SuS**



**STUDBOLT B7 C/W
2 NUTS 2H
CADMIUM**



**STUDBOLT B7 C/W
2 NUTS 2H
FLUORO CARBON
COATED**



**CENTER/
U-BOLT**



**CLAMP
KNALPOT**



RING PLAT



RING PER



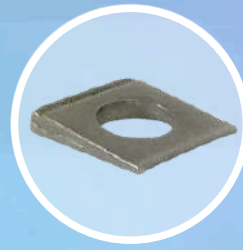
RIVET



**ROOFING
BAJA RINGAN**



CB BOLT



TAPER WASHER



**U BOLT
CARBON STEEL**

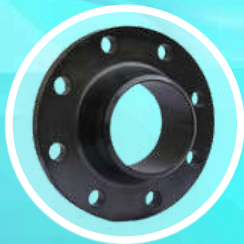


UNC BOLT



VERSING MIN

• **FLANGE CARBON STEEL & STAINLESS STEEL**



**WELD NECK
CARBON STEEL**



**BLIND
CARBON STEEL**



**SLIP ON
CARBON STEEL**



**SOCKET WELD
CARBON STEEL**



FLANGE



**WELD NECK
STAINLESS STEEL**



**BLIND
STAINLESS STEEL**



**SLIP ON
STAINLESS STEEL**

• **FORGED FITTINGS - STAINLESS STEEL 304/L**



90° ELBOW



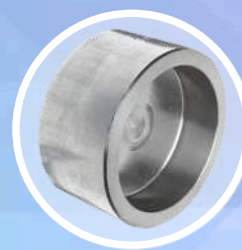
45° ELBOW



TEE



UNION



CAP



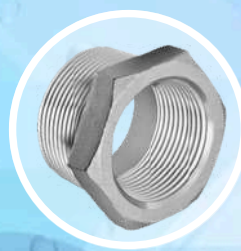
COUPLING



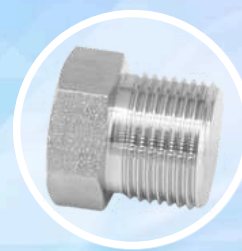
**HALF
COUPLING**



**HEX
NIPPLE**



**HEX
BUSHING**



HEX PLUG

• **FORGED FITTINGS - STAINLESS STEEL 316/L**



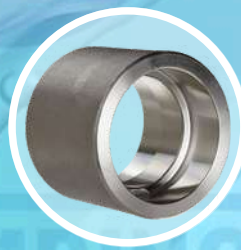
90° ELBOW



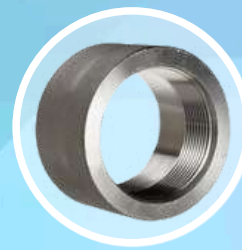
45° ELBOW



TEE



COUPLING



**HALF
COUPLING**



UNION



CAP



**HEX
NIPPLE**



**HEX
BLUSHING**



HEX PLUG

• **FORGED FITTINGS - CARBON STEEL**



90° ELBOW



45° ELBOW



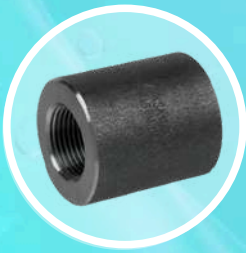
TEE



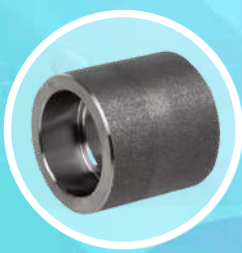
REDUCER TEE



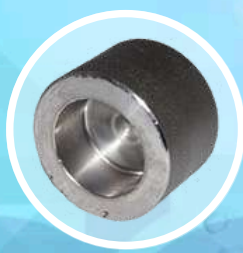
UNION



COUPLING



**HALF
COUPLING**



CAP



**HEX
NIPPLE**



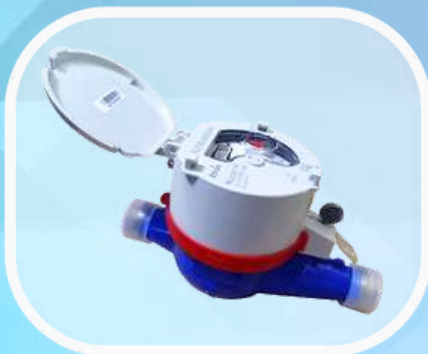
**HEX
BLUSHING**



HEX PLUG

DUNIAPLUMBING

- **WATER METER - ITRON**



- **WATER METER - AMICO**



- **WATER METER - CALIBRATE**



- **WATER METER - NANKAI**



- **WATER METER - SENSUS**



- **WATER METER - OPX & AMINB**



- **WATER METER - ONDA**



- **WATER METER - B & R**



- **WATER METER - IMD**

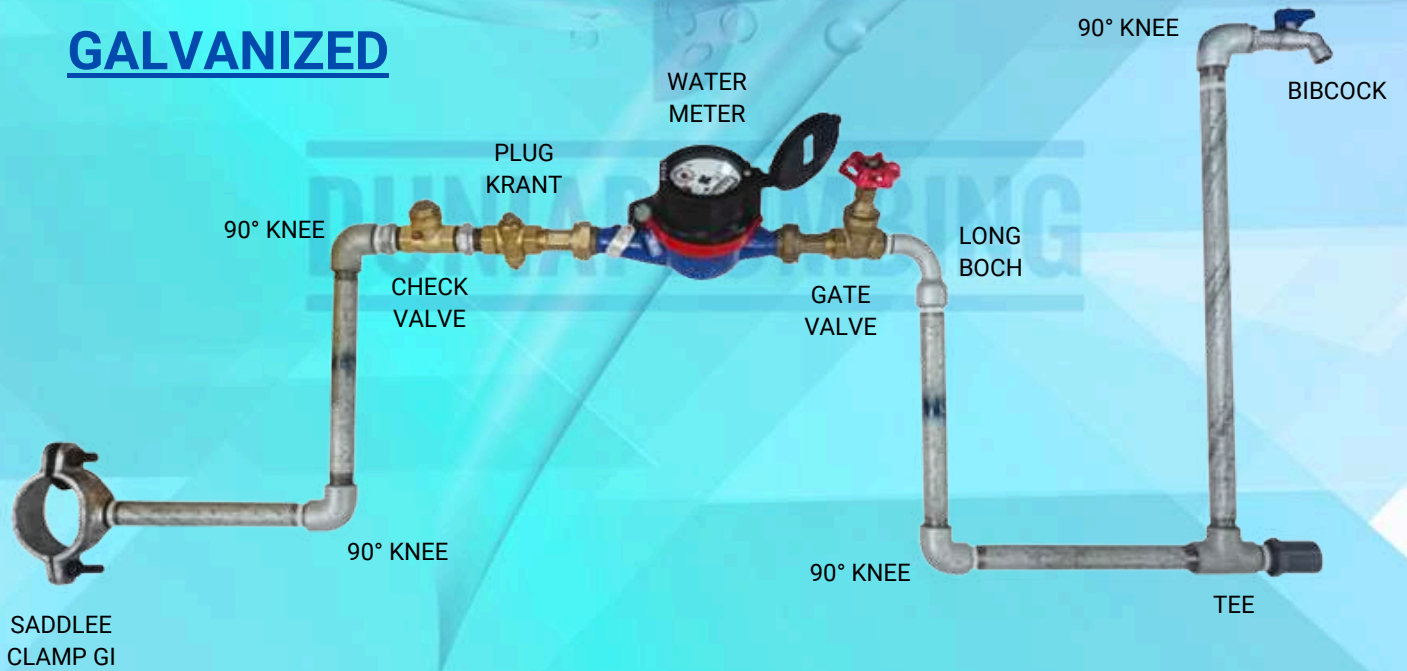


• **HOUSE CONNECTION**

HDPE



GALVANIZED



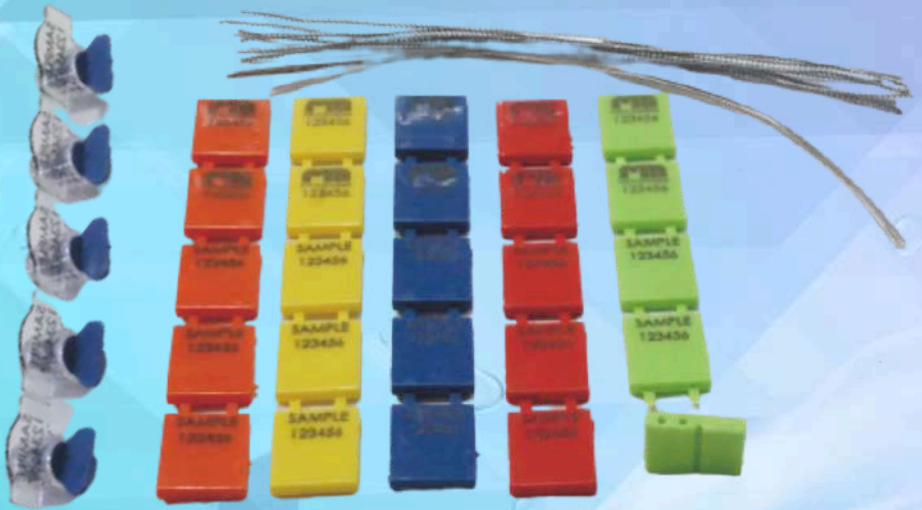
• **ACCESSORIES**



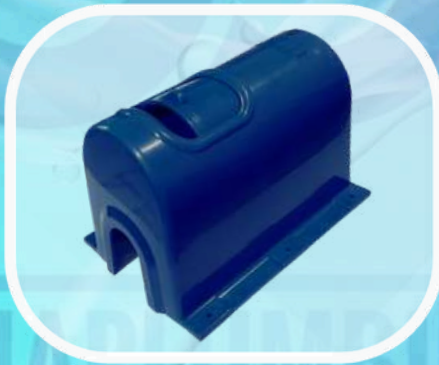
SEAL TAPE



PRESSURE GAUGH



SEAL WIRE



**BOX METER
(SLIDE SYSTEM)**

**BOX METER
(LOCK SYSTEM)**



• WELDING MACHINE - MANUAL SERIES



TYPE

1. SHDS 160 T A2
2. SHDS 200 T A2
3. SHDS 160 T A4
4. SHDS 200 T A4
5. SHDS 160 Y A2
6. SHDS 200 Y A2
7. SHDS 250 Y A2
8. SHDS 160 Y A4
9. SHDS 200 Y A4
10. SHDS 250 Y A4
11. SHDS 160 L A2
12. SHDS 200 L A2
13. SHDS 250 L A2
14. SHDS 160 L A4
15. SHDS 200 L A4
16. SHDS 250 L A4

• WELDING MACHINE - HYDRAULIC SERIES



TYPE

1. SHD 160
2. SHD 200
3. SHD 250
4. SHD 315
5. SHD 355
6. SHD 450
7. SHD 500
8. SHD 630
9. SHD 800
10. SHD 1000
11. SHD 1200
12. SHD 1600

- **ELECTROFUSION WELDING MACHINE**



TYPE

1. EF 315
2. EF 500
3. EF 630

- **SOCKETFUSION WELDING MACHINE**



TYPE

1. SF 63
2. SF 110
3. SF 160
4. SF 160 TABLE TOP

• VALVE

Actuator Motorized Valve



Actuator motorized valve adalah komponen penting dalam sistem kontrol industri modern, di mana kontrol aliran cairan atau gas perlu dilakukan secara otomatis dan efisien. Dengan memanfaatkan motor listrik untuk membuka atau menutup katup, actuator motorized valve memungkinkan pengaturan aliran yang lebih presisi dan mengurangi kebutuhan akan intervensi manual, yang sangat berguna dalam berbagai aplikasi industri.

Fungsi utama actuator motorized valve adalah untuk menyediakan pengendalian aliran fluida secara otomatis, presisi, dan efisien dalam berbagai sistem industri.

Pneumatic Valve



Pneumatic valve adalah jenis katup yang dikendalikan oleh tekanan udara atau kompresi udara untuk mengatur aliran cairan, gas, atau uap dalam sistem pipa atau instalasi industri. Katup ini menggunakan aktuator pneumatik, yaitu komponen yang digerakkan oleh udara bertekanan untuk membuka, menutup, atau mengatur posisi katup.

Pneumatic valve berfungsi untuk mengatur aliran, arah, dan tekanan dalam berbagai aplikasi industri menggunakan udara bertekanan. Katup ini sangat berguna untuk otomatisasi sistem, memberikan kontrol yang cepat dan presisi, serta meningkatkan efisiensi dan keamanan dalam operasi industri. Dengan penerapan yang tepat, pneumatic valve dapat sangat meningkatkan produktivitas dan keselamatan dalam berbagai sektor industri.

• CHEMICAL



Cairan Pengeras Beton

Cairan pengeras beton adalah bahan kimia yang diaplikasikan pada permukaan beton setelah pengerasan untuk meningkatkan ketahanan, kekerasan, dan daya tahan permukaan beton terhadap abrasi, goresan, serta bahan kimia.

Beberapa manfaat dari cairan pengeras beton :

- Meningkatkan kekerasan permukaan
- Meningkatkan ketahanan terhadap air
- Meningkatkan ketahanan pada bahan kimia
- Mencegah keretakan



Kaporit

Kaporit adalah nama umum untuk senyawa kimia yang mengandung klorin, biasanya dalam bentuk kaporit kalsium atau kaporit natrium. Senyawa ini umumnya digunakan sebagai disinfektan, pemutih, dan pengoksidasi

Beberapa manfaat dari kaporit :

- Disinfektan air
- Pemutih
- Pengendalian alga di kolam renang
- Pengolahan limbah
- Pengolahan air di industri
- Pengawet pangan
- Pembasmi hama dan penyakit tanaman

INSTALLASI

• Project Air Bersih



• Project Hydrant



• Project Biogas



INSTALLASI

- Project Geomembrane & Geotextille



- **Project Rockwool Pipe (Insulation Pipe)**





- **Sambungan Rumah (SR)**



PROSES PENGIRIMAN





• CATHODIC PROTECTION SYSTEM



Untuk melindungi logam terhadap bahaya korosi perlu dilakukan system perlindungan katodik yang disebut Cathodic Protection System.

Cathodic Protection bekerja dengan cara merubah seluruh permukaan logam menjadi daerah katoda, yaitu dengan memberikan arus proteksi dari luar yang akan menekan/menahan arus yang akan keluar dari permukaan logam yang menyebabkan korosi.

Arus Proteksi pada cathodic protection ini didapat dengan menggunakan suatu anoda tertentu yang dibuat dari logam lain, dipasang pada permukaan besi yang akan dilindungi dan berbeda di dalam elektrolit yang sama. Anoda ini disebut anoda korban (sacrificial) dan umumnya terbuat dari logam aluminium dan Zinc.

• COMPOSITE WRAPPING SYSTEMS



Composite Wrapping Systems adalah Fiber Reinforced Polymers (FRP'S) yang terdiri dari kombinasi yang telah teruji antara serat Glass, Carbon and Aramid (Kevlar) yang berkekuatan tarik tinggi yang diformulasikan khusus Epoxy dan Resin yang sesuai.

Kombinasi yang telah teruji dari serat mutu tinggi dan Resin akan tercipta FRP Composite System.

Karakter komposit yang sudah teruji antara kombinasi serat dan epoxy yang digunakan dalam design perhitungan

Composite Wrapping System dapat digunakan untuk perkuatan pipa untuk mengakomodasi tekanan internal yang meningkat, beban flex- ural, lalu lintas dan beban tanah.

Composite Wrapping dapat digunakan untuk memperkuat pipa yang mengalami penurunan kapasitas terhadap tekanan akibat kerusakan terhadap korosi.

Composite Wrapping dapat melekat dengan baik dibagian luar maupun dalam pipa. Material terhadap di NSF/ANSI

• **FIRE HYDRANT**



HYDRANT VALVE



SIAMASE CONNECTION



FIRE HOSE CANVAS



FIRE HOSE PU



HOSE RACK



JET NOZZLE



NOZZLE GUN



HOSE REEL



HYDRANT BOX TYPE A



HYDRANT BOX TYPE B



HYDRANT BOX TYPE C



FIRE HOSE RUBBER



HYDRANT PILLAR ONE WAY



HYDRANT PILLAR TWO WAY RRJ



JOCKEY FIRE PUMP



BUZZER SIRINE



FIRE EXTINGUISHER



HEAD SPRINKLE

- **FIRE HYDRANT**

**DIESEL
PUMP**



**ELECTRRIC
FIRE PUMP**

The **World of Plumbing**
Complements Your Needs



DUNIAPLUMBING

PT. EXCELINDO ADHI PRATAMA

Jl. Hayam Wuruk Raya No. 11A Cibodas

Kota Tangerang, Banten 15138.

Telp. 021 5566 8582

Whatsapp : 0811 1089 357