



## COMPANY PROFILE & CATALOG

The World of Plumbing  
Complements Your Needs



# PT. EXCELINDO ADHI PRATAMA

Jl. Hayam Wuruk Raya No.11a, RT.001/RW.002, Cibodas, Kec. Cibodas, Kota Tangerang, Banten 15138.  
Telp. 021-5566 8582

## **COMPANY PROFILE**

### **EXCELINDO ADHI PRATAMA (DUNIA PLUMBING)**

Adalah Perusahaan yang bergerak dibidang Kontraktor & Supplier, yang telah terpercaya untuk memenuhi kebutuhan para konsumen dengan tingkat kepuasan penuh.

Excelindo Adhi Pratama sudah terbukti terpercaya, telah mampu memberikan kepuasan bagi para konsumen, yang sudah bertahun - tahun memberikan kontribusi pelayanan jasa instalasi maupun supply product – productnya ke berbagai Instansi Pemerintah maupun Swasta diberbagai daerah di Indonesia.

### **PRODUCT YANG KAMI SUPPLY**

1. Pipa (HDPE, Subduct, MDPE, PVC/uPVC, Conduit, PPR, Corrugated, Spiral, Galvanis, Black Steel, Stainless)
2. Fittings & Valve (HDPE, PVC, PPR, Brass, Cast Iron, Ductile Iron, Stainless)
3. Accessories Jaringan Air (Water Meter, Dresser Joint, Dismantling Joint, Flexible Joint, Flange, Tee All Flange, Flange Socket, Kubus Apung, Box Meter (Flow Meter), Sambungan Rumah (SR), Welding Machine HDPE, dll)
4. Alat Pemadam Kebakaran , Pompa, Hydrant Box, Hydrant Pilar.
5. Solar Cell (Panel Surya), Cable Tray, Duct, Ladder, Inverter.
6. Compressor & Pump

## **JASA INSTALASI**

- Kami Sudah Berpengalaman Dalam Bidang Penyambungan Pipa HDPE Khususnya
- Memiliki SDM yang berpengalaman dan berkualitas di bidangnya yang sudah dibekali training menurut Standar SOP Dunia Plumbing
- Memiliki Machine Welding & peralatan yang lengkap untuk Mendukung Khususnya pada Penyambungan Pipa HDPE
- Semua ManPower Sudah Melakukan Test Kesehatan, dan dilengkapi Alat Pelindung Diri (APD) yang sudah memenuhi Standar SOP sesuai yang di terapkan pada K3.

## **JASA INSTALASI**

1. Jasa Penyambungan Pipa (HDPE, MDPE, PVC, PPR, Galvanis, Black Steel)
2. Jasa Installasi Rumah Pompa Hydrant
3. Jasa Rangkai Sambungan Rumah (SR)
4. Jasa Purgung & Hydro Test
5. Jasa Service Inverter
6. Jasa Pemasangan/Rangkai Solar Cell (Panel Surya)
7. Service Compressor & Pump
8. Jasa Installasi Penyambungan Pipa (HDPE, PPR, PVC & Steel)
9. Jasa Service Inverter
10. Jasa Hydro Test (Test Tekanan Pipa) > Media (Air/Udara)
11. Jasa Senai / Senai Pipa (Pembuatan Drat)
12. Jasa Rangkai Sabungan Rumah (SR)

### **LAYANAN PERMOHONAN PENAWARAN HARGA**

Dengan Memberikan Informasi sbb :

1. NAMA PEMOHON (Penawaran Harga)
2. JABATAN / BAGIAN
3. NAMA PERUSAHAAN
4. MELAMPIRKAN BOQ / RAB Atau dengan memberikan informasi barang kebutuhannya :
  - Nama Barang
  - Size / Type
  - Quantity (Jumlah Barang)

### **KHUSUS LAYANAN PERMOHONAN PENAWARAN HARGA JASA INSTALLASI**

Dengan Memberikan Informasi sbb :

1. NAMA PEMOHON (Penawaran Harga)
2. JABATAN/ / BAGIAN
3. NAMA PERUSAHAAN
4. MELAMPIRKAN BOQ / RAB Atau dengan memberikan informasi barang kebutuhannya :
  - Nama Barang
  - Size / Type
  - Quantity (Jumlah Barang)
5. Wajib Dilakukannya survey kelokasi pemasangan, agar mengetahui medan untuk menghitung tingkat kesulitan pada saat Installasi.

## **PROJECT REFERENSI**

### **INSTALASI & SUPPLY PRODUCT**

- Dinas PU CIPTA KARYA > Project SPAM Brebes, Jawa Tengah 2018
- Dinas BBWS > Project RESEVOIR Semarang 2018
- PT. PETRO KIMIA GRESIK, Project Kimia Fluide Jawa Timur 2018
- PDAM > Project Air Bersih, Simalungun – Sumatera Utara 2018
- Dinas Perkim BINTAN > Project SPAM BINTAN, Kepulauan Riau (2018)
- PDAM Way Rilaw > Project Jaringan Air Bersih, Kota Bandar Lampung (2018)
- Dinas PU & BMCK > Project SPAM Purworejo, Jawa Tengah 2019
- Dinas Cipta Karya > Project SPAM Pekan Baru 2019
- Dinas Perkim > Project SPAM Magelang, Jawa Tengah 2019
- PT. Utama Karya > Project Bendungan Penanggulangan Bencana, Dompu - NTB (2020)
- Dinas Perkebunan > Project Perkebunan Teh & Perkebunan Kopi, Pangalengan – Jawa Barat (2022)
- Dinas Perhutani > Project Drainase / Irigasi (Surabaya)
- Dinas PU > Project Jaringan Air Bersih, Pontianak Kalimantan Barat (2021)
- PDAB > Project Spam Jawa Tengah (2020 – 2021)
- PDAM > Project Air Bersih > Sidoarjo, Jawa Timur (2021)
- PERKEBUNAN > Serang, BANTEN (2021)
- PDAM > Project Jaringan Air Bersih Kota Bengkulu (2021)
- PERUMDA > Project Jaringan Air Bersih Kalimantan Selatan (2020)
- Dinas PU > Project Air Bersih > Sorong, Papua (2021)
- PT.KRAKATAU STEEL > PPR Cilegon, Banten (2022)
- DINAS PEMMERINTAH KOTA BEKASI, BIOGAS Bantar Gebang, Bekasi (2022)
- PT.TELKOM > Project Fiber Optic > Makassar, Sulawesi Selatan (2022)
- Dinas PEMDA > Project SR, Seluma - Bengkulu Selatan (2022)
- Project Industry Kimia > PPR Manado, Sulawesi Utara (2022)
- Pesantren ECO II (Darul Tauhid) – Project Drainase, Bandung - Jawa Barat (2022)
- RSUD Balaraja > Project Rumah Pompa Hydran – BANTEN (2022)
- ETC

## **STRUKTUR ORGANISASI**

NAMA PERUSAHAAN : PT. EXCELINDO ADHI PRATAMA  
BRAND : DUNIA PLUMBING  
ALAMAT : JL. Hayam Wuruk Raya No.11 A, Cibodas, Tangerang, Banten, 15138.  
TELP (OFFICE) : (021) 55668582

VISI : Menjadi Salah Satu Perusahaan Besar di Indonesia yang Terpercaya dan Mengutamakan Pelayanan Terbaik.

MISI : Menjadi Perusahaan Yang dapat memberikan pelayanan dengan tingkat Kepuasan Penuh, Terpercaya, dan dapat Memberi Suatu Perubahan Kemajuan menyeluruh pada kalangan, Industry, Instansi Pemerintah, Maupun Instansi Swasta di berbagai daerah.

SLOGAN : The World of Plumbing Complements Your Needs

LOGO :



## **SERTIFIKAT**

- SERTIFIKAT K3 UMUM
- SERTIFIKAT Instalasi (Solusi Antisipasi Human Error pada penyambungan pipa HDPE)
- SERTIFIKAT SNI PRODUCT (Pipa HDPE/PVC/PPR/ Steel)
- SERTIFIKAT Full Grade Product (Pipa HDPE/PVC/PPR/ Steel)
- SERTIFIKAT KALIBRASI/TERA (Water Meter/ Flow Meter)

## MATERIAL PRODUCT

### PIPA

- Pipa HDPE PE 100 (Solid)
  - Pipa HDPE Subduct (Fiber Optic)
  - Pipa HDPE Corrugated
  - Pipa MDPE (For GAS)
  - Pipa PPR (Cool, Fluide, Hot)
  - Pipa PVC / uPVC (SNI & JIS)
  - Pipa PVC Limbah SDR 41
  - Pipa Conduit PVC
  - Pipa Galvanized (GIP)
  - Pipa Carbon Steel/Black Steel (BS/CS)
  - Pipa Schedule (SCH)
  - Pipa Stainless Steel (SS)
  - Pipa Welded
- > Air Bersih
  - > Selongsong Cable (Fiber Optic)
  - > Drainase Resapan Air & Selongsong Cable
  - > Gas, PGN, LNG, LPG (Migas)
  - > Air Dingin, Cairan Kimia, & Air Panas
  - > Air Bersih
  - > Air Kotor / Air Limbah
  - > Installasi Cable Listrik
  - > Air Bersih
  - > Air Bersih / Gas
  - > Air Bersih / Gas
  - > Tiang Pancang / Tiang Jembatan
  - > Air Bersih / Oil & Gas
  - > Air Bersih / Oil & Gas

### FITTINGS

#### v Fittings HDPE

- Fittings Compress HDPE
- Fittings Push on / Push Fit HDPE
- Fittings Butt Fusion Welding HDPE
- Fittings Electrofusion HDPE

#### v Fittings PVC/uPVC

- Fittings PVC SCJ (MOF) – Solvent Cement Joint
- Fittings PVC RRJ - Rubber Ring Joint

#### v Fittings PPR

#### v Fittings Steel

- Fittings GIP (Galvanized)
- Fittings SGP (Steel Galvanized Pipe)
- Fittings SCH (Steel Carbon High)
- Fittings Stainless Steel (SS)

## **MATERIAL PRODUCT**

### **VALVE**

- VALVE HDPE
- VALVE PVC / uPVC
- VALVE PPR
- VALVE BRASS (Kuningan)
- VALVE Bronze (Perunggu)
- VALVE Cast Iron (CI)
- VALVE Ductile Iron (DCI)
- VALVE Stainless Steel (SS)

### **FLANGE**

- Flange Steel
- Flange HDPE
- Flange Adaptor HDPE
- Flange PVC
- Flange Socket (PVC/CI/DCI)
- Flange Spigot (PVC/CI/DCI)
- Blind Flange (PVC/CI/DCI)
- BEND ALL FLANGE (PVC/CI/DCI)
- TEE ALL FLANGE (PVC/CI/DCI)

### **ACCESSORIES**

- WATER METER / FLOW METER
- BOX METER
- DRESSERT JOINT (CI/DCI)
- DISMANTLING JOINT (CI/DCI)
- BEND 90°, 45°, 22.5° (HDPE/PVC/CI/DCI)
- BOX STREET (STREET BOX) > RUMAH VALVE
- PRESSURE GAUGE
- REPAIR CLAMP (CI/SS)

### **WATER METER / FLOW METER**

- Water Meter Brass (Kuningan)
- Water Meter HDPE /PVC
- Water Meter Plastic
- Flow Meter Type Flange

### **WELDING MACHINE > BUTT FUSION HDPE/PPR**

- WELDING MACHINE – For PPR (Type Hand)
- WELDING MACHINE HDPE – TYPE MANUAL
- WELDING MACHINE HDPE – HYDROLIC

### **PAKET SAMBUNGAN RUMAH (SR)**

- SAMBUNGAN RUMAH (SR) HDPE
- SAMBUNGAN RUMAH (SR) PVC
- SAMBUNGAN RUMAH (SR) GALVANIS
- SAMBUNGAN RUMAH KOMBINASI

- KUBUS APUNG (V-FLOAT)
- TANDON / TANGKI TOREN
- SCREEN PIPA (PIPA FILTER)

## **PUMP (POMPA)**

- CENTRIFUGAL PUMP
- HYDROLIC PUMP
- ROTARI PUMP
- BOOSTER PUMP

## **ELECTRICAL**

- INVERTER
- SOLAR CEL (PANEL SURYA)
- CABLE

## **HYDRANT**

- FIRE HOSE
- HYDRANT BOX
- HYDRANT PILAR (One Way / Two Way)
- HYDRANT VALVE
- NOZZLE
- TABUNG APAR
- POWDER / FLUIDE

## **STANDAR PRODUCT**

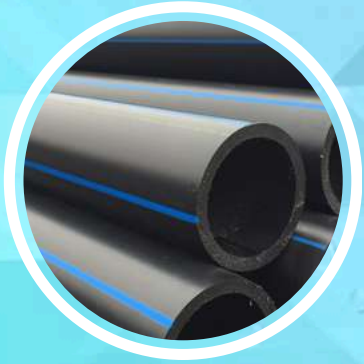
- SNI (Standar Nasional Indonesia)
- JIS (Japanese Industrial Standar)
- ANSI (American National Standart Institute)
- API (American Petroleum Institute) > Industry Oil & Gas
- ASTM (American Society For Testing Materials)
- ASME (American Society of Mechanical Engineers)
- DIN (Deutches Institut Fur Normong) > German
- BS (British Standars) > Negara Inggris

**DUNIAPLUMBING**



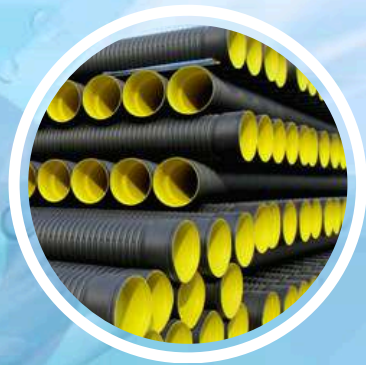
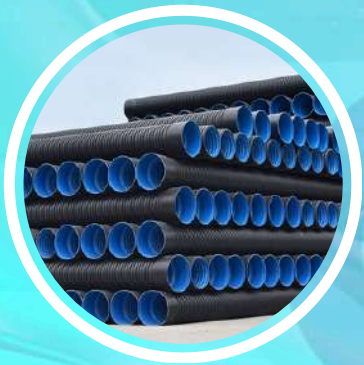
- **HDPE PIPE**

---



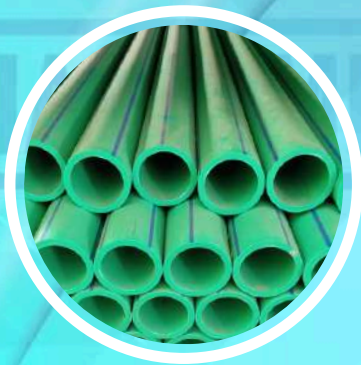
- **CORRUGATED PIPE**

---



- **PPR PIPE**

---



- **UPVC PIPE**

---



- **MDPE PIPE**

---



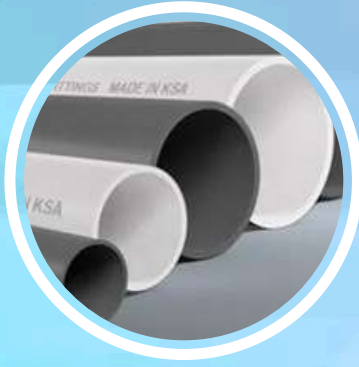
- **SUBDUCT PIPE**

---



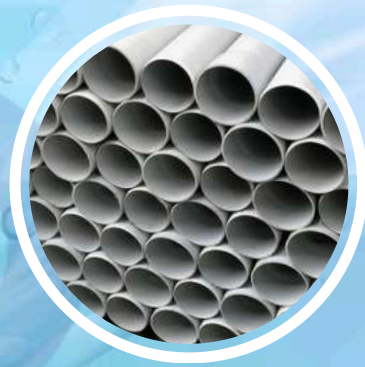
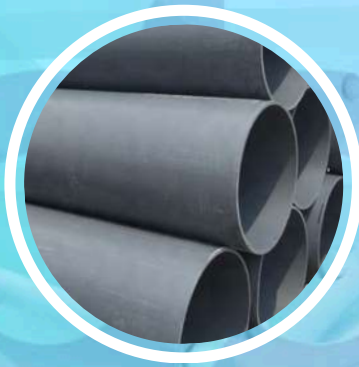
- **PVC PIPE (AW)**

---



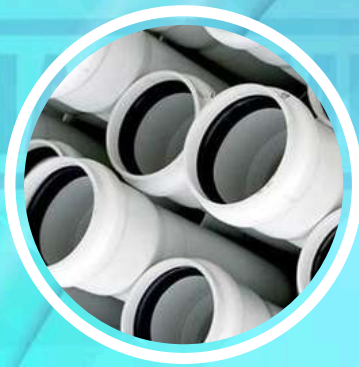
- **PVC PIPE (D)**

---



- **PVC PIPE (SNI)**

---



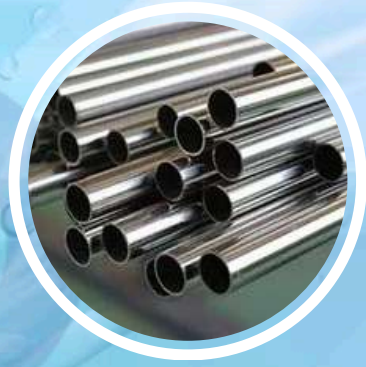
- **GALVANIZED PIPE**

---



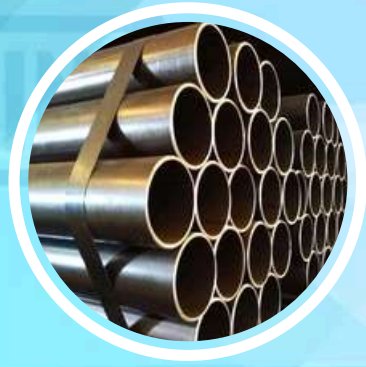
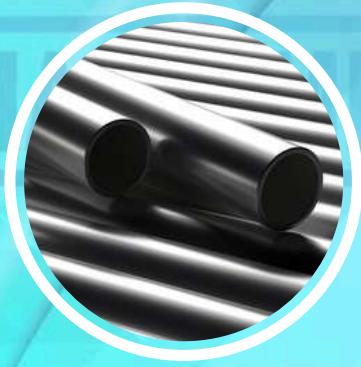
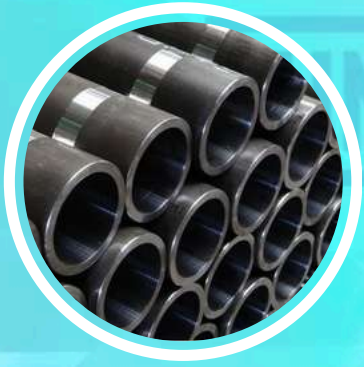
- **STAINLESS STEEL PIPE**

---



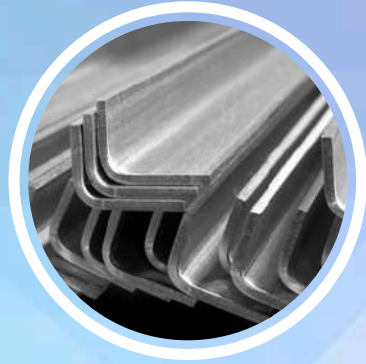
- **CARBON STEEL PIPE/BLACK STEEL PIPE**

---



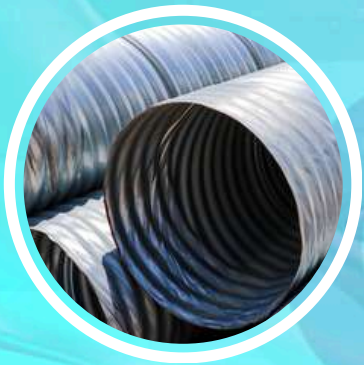
- **BESI HOLLOW-BESI UNP-BESI SIKU**

---



- **ARMCO**

---



- **NESTABLE FLANGE**

---



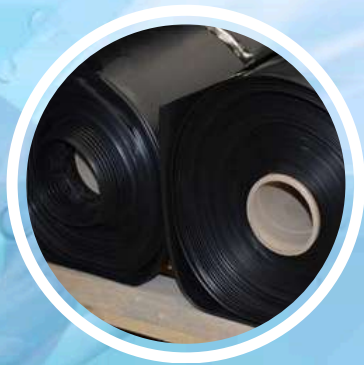
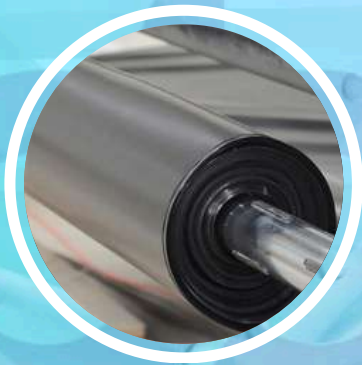
- **ROCKWOOL PIPE**

---



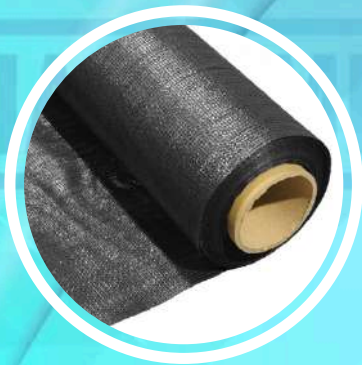
- **GEOMEMBRANE HDPE**

---



- **GEOTEXTILE WOVEN & NON WOVEN**

---



• **PVC FITTINGS**



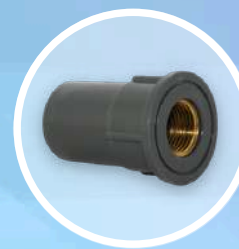
**SOCKET (AW)**



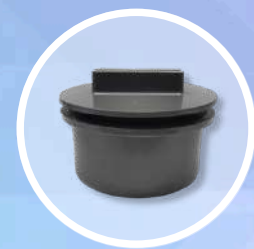
**FAUCET  
SOCKET (AW)**



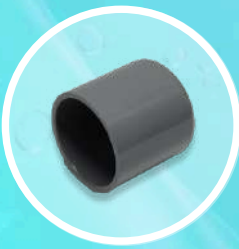
**VALVE  
SOCKET (AW)**



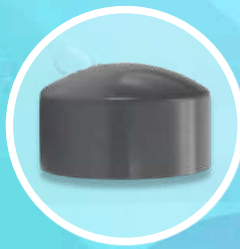
**FAUCET  
SOCKET (AW)  
with metal insert**



**CLEAN OUT (D)**



**CAP (AW)**



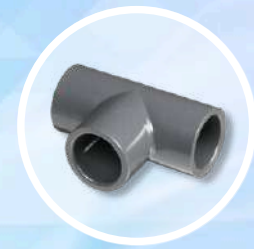
**CAP (D)**



**INCREASER (D)**



**REDUCER (AW)**



**TEE (AW)**



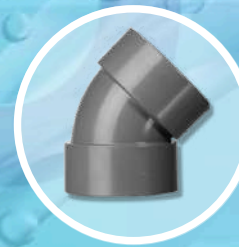
**TEE (D)**



**REDUCER  
TEE (AW)**



**FAUCET  
TEE (AW)**



**45° ELBOW (D)**



**FAUCET  
ELBOW (AW)**



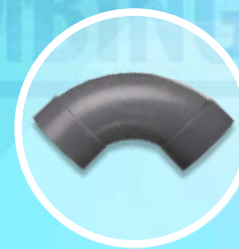
**Y-BRANCH (D)**



**LARGE  
RADIUS TEE (D)**



**LARGE  
RADIUS DOUBLE  
TEE (AW)**



**LARGE  
RADIUS  
ELBOW (AW)**



**ELBOW (D)**

• **PVC FITTINGS & PVC VALVE**



**45° ELBOW (AW)**



**90° ELBOW (AW)**



**UNION  
SOCKET (AW)**



**FAUCET  
ELBOW (AW)  
with metal insert**



**UNION  
THREAD (AW)**



**PLUG (AW)**



**FLANGE (AW)**



**P-TRAP (D)**



**DOUBLE  
NIPPLE (AW)**



**FOOT VALVE  
SOCKET (AW)**



**SWING CHECK  
FLANGE END (AW)**



**SWING CHECK  
VALVE (AW)**



**SWING FOOT  
VALVE FLANGE  
END (AW)**



**BUTTERFLY  
VALVE**



**DOUBLE UNION  
BALL VALVE**



**BALL VALVE  
SOCKET**



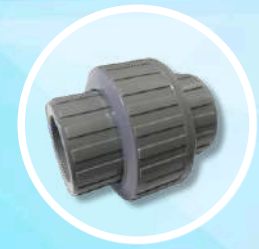
**WATER MOOR**



**PVAG/PVBG**



**PVCBV**



**WATER MOOR**



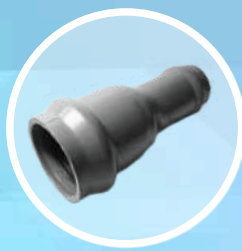
• **RUBBER RING JOINT & SOLVECEMENT JOINT**



**REPAIR  
SOCKET RRJ (SNI)**



**SOCKET  
RRJ (SNI)**



**REDUCER  
SOCKET RRJ (SNI)**



**REDUCER TEE  
RRJ (SNI)**



**EQUAL  
TEE RRJ (SNI)**



**LONG BEND  
SOCKET RRJ (SNI)**



**FLANGE  
SOCKET RRJ (SNI)**



**90° ELBOW  
KNEE RRJ (SNI)**



**45° ELBOW  
KNEE RRJ (SNI)**



**END CAP  
RRJ (SNI)**



**VALVE  
SOCKET RRJ (SNI)**



**FLANGE ADAPTOR  
RRJ (SNI)**



**BEND SPIGOT  
RRJ (SNI)**



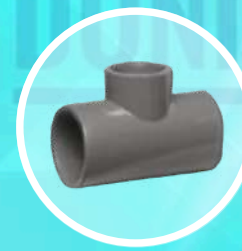
**BEND ALL  
RRJ (SNI)**



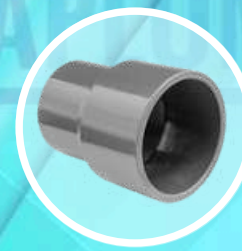
**RUBBERING DUO  
(SNI)**



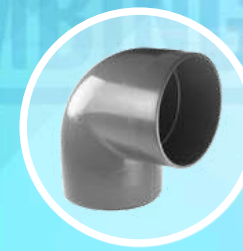
**TEE SCJ (SNI)**



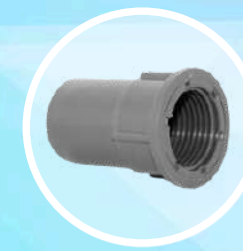
**REDUCER  
TEE SCJ (SNI)**



**REDUCER SOCKET  
SCJ (SNI)**



**ELBOW  
SCJ (SNI)**



**FAUCET SOCKET  
SCJ (SNI)**



**FAUCET ELBOW  
SCJ (SNI)**



**SOCKET  
RRJ (SNI)**



**FLANGE  
SPIGOT SCJ (SNI)**



**CLAMP  
SADDLE (AW)**



**BEND ALL  
SOCKET SCJ (SNI)**

## • UPVC FITTINGS



**45° ELBOW**



**REDUCER**



**Y-BRANCH**



**TEE WYE**



**SOCKET**



**90° ELBOW**



**REPAIR  
COUPLING**



**REGISTER  
COUPLING**



**SOCKET PLUG**



**CAP**



**FLOOR GULLY  
TWO SIDE  
RUBBER**



**P-TRAP**



**30° BEND**



**GULLY  
TRAP**



**GULLY  
ADAPTOR**



15° BEND



FLOOR GULLY  
STEEL COVER



RETURN  
VALVE



ACCESS BEND



FLOOR GULLY  
TWO SIDE  
SOLVENT



45° DOUBLE  
BRANCH



DOUBLE  
BRANCH

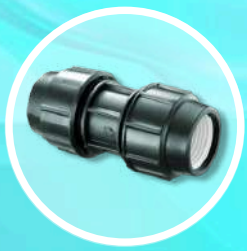


ACCESS PIPE



WASTE  
ADAPTOR

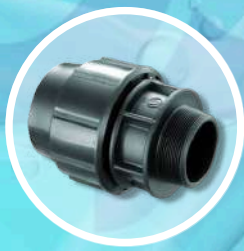
## • COMPRESSION FITTINGS



COUPLER



SOCKET



MALE  
ADAPTOR



FEMALE  
ADAPTOR



CLAMP  
SADDLE



REDUCER



TEE  
THREAD MALE



TEE  
THREAD FEMALE



TEE  
COUPLER



90° ELBOW



**CAP**



**MALE  
ELBOW**



**FEMALE  
ELBOW**



**FLANGE  
ADAPTOR**



**FERRULE  
CUTTER**



**DOUBLE  
NIPPLE**



**REDUCER  
NIPPLE**



**PP BUSH**



**EMERGENCY  
REPAIR**



**BALL  
VALVE**



**MALE UNION  
BALL VALVE**



**FEMALE UNION  
BALL VALVE**



**COUPLING  
SADDLE**



**BALL VALVE  
F/F**



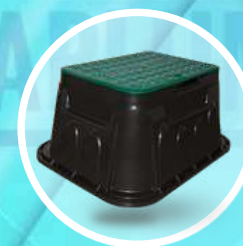
**6" CIRCULAR  
VALVE BOX**



**10" CIRCULAR  
VALVE BOX**



**12" STANDARD  
VALVE BOX**



**14" STANDARD  
VALVE BOX**

## • ELECTROFUSION FITTINGS

---



90° ELBOW



45° ELBOW



COUPLER



EQUAL  
TEE



REDUCER  
TEE



STUB END



END CAP



REDUCER



CLAMP  
SADDLE

## • PUSH ON FITTINGS

---



90° MALE  
ELBOW



90° FEMALE  
ELBOW



MALE  
ADAPTOR



FEMALE  
ADAPTOR



REDUCER

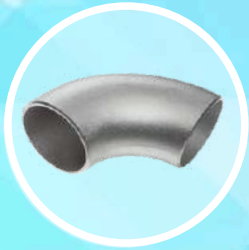


90° ELBOW



TEE

• **BUTT WELDING FITTINGS - STAINLESS STEEL SEAMLESS**



**90° LONG  
RADIUS ELBOW**



**45° LONG  
RADIUS ELBOW**



**CAP**



**TEE**



**REDUCER  
TEE**



**REDUCER  
CONCENTRIC**



**REDUCER  
ECCENTRIC**

• **BUTT WELDING FITTINGS - CARBON STEEL**



**180° LONG  
RADIUS ELBOW**



**90° LONG  
RADIUS ELBOW**



**45° LONG  
RADIUS ELBOW**



**45° SHORT  
RADIUS ELBOW**



**CAP**



**REDUCER  
CONCENTRIC**



**REDUCER  
ECCENTRIC**



**REDUCER  
TEE**



**TEE**

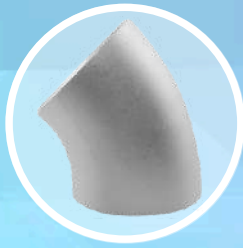
• **BUTT WELDING FITTINGS - GALVANIZED**



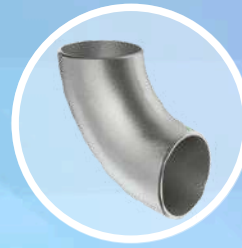
**180° LONG  
RADIUS ELBOW**



**90° LONG  
RADIUS ELBOW**



**45° LONG  
RADIUS ELBOW**



**90° SHORT  
RADIUS ELBOW**



**45° SHORT  
RADIUS ELBOW**



**CAP**



**TEE**



**REDUCER  
TEE**



**REDUCER  
CONCENTRIC**



**REDUCER  
ECCENTRIC**

• **BUTT FUSION FITTINGS**



**STUB END  
(INJECTION)**



**STUB END SHORT  
(FABRICATED)**



**STUB END LONG  
(FABRICATED)**



**FLANGE LONG NECK  
(FABRICATED)**



**COUPLER  
(FABRICATED)**



**GASKET**



**CAP  
(FABRICATED)**



**BACKING RING  
FLANGE  
(JIS, PN, ANSI)**



**BACKING RING  
FLANGE  
(HDPE)**



**BOLT & NUT**



**BLIND FLANGE**



**BLIND FLANGE (HDPE)**



**DRESSER JOINT (FABRICATED)**



**DRESSER JOINT LONG (FABRICATED)**



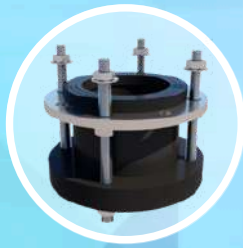
**FLANGE ADAPTOR (FABRICATED)**



**STEEL FLANGE ADAPTOR (FABRICATED)**



**DISMANTLING JOINT FLANGE (FABRICATED)**



**DISMANTLING JOINT STEEL FLANGE**



**SPOOLS (FABRICATED)**



**EXTENDED FLANGE (FABRICATED)**



**OFFSETS (FABRICATED)**



**90° ELBOW (INJECTION)**



**45° ELBOW (INJECTION)**



**90° ELBOW (SEGMENTED)**



**45° ELBOW (SEGMENTED)**



**90° SWEEP BAND (FABRICATED)**



**45° SWEEP BAND (FABRICATED)**



**90° ELBOW (FABRICATED)**



**45° ELBOW (FABRICATED)**



**90° ELBOW ALL FLANGE (INJECTION)**





**45° ELBOW  
ALL FLANGE  
(INJECTION)**



**90° SWEEP BAND  
ALL FLANGE  
(FABRICATED)**



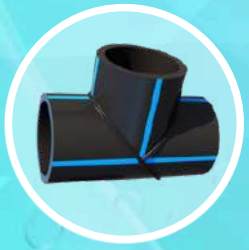
**45° SWEEP BAND  
ALL FLANGE  
(FABRICATED)**



**TEE  
(INJECTION)**



**CROSS TEE  
(INJECTION)**



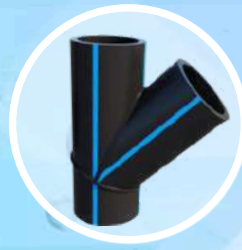
**TEE  
(SEGMENTED)**



**CROSS TEE  
(SEGMENTED)**



**TRUE Y  
(SEGMENTED)**



**TEE Y  
(SEGMENTED)**



**TEE  
(FABRICATED)**



**REDUCER TEE  
(FABRICATED)**



**TEE ALL  
FLANGE  
(FABRICATED)**



**REDUCER TEE  
(SEGMENTED)**



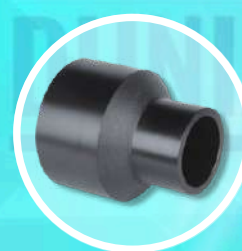
**REDUCER  
CROSS TEE  
(SEGMENTED)**



**REDUCER TEE Y  
(SEGMENTED)**



**REDUCER TEE  
(FORGED)**



**REDUCER  
(FABRICATED)**



**FLEXIBLE  
JOINT SINGLE**



**FLEXIBLE  
JOINT DOUBLE**

# • PPR FITTINGS



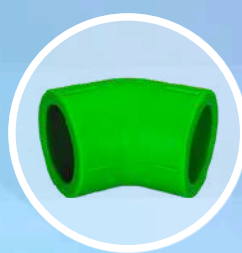
SOCKET



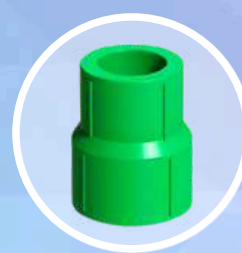
90° ELBOW



TEE



45° ELBOW



REDUCER



CROSS TEE



END CAP



UNION



REDUCER ELBOW



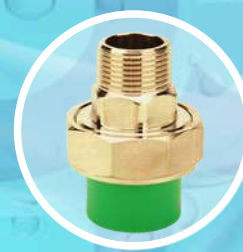
PIPE CLAMP



MALE THREAD



FEMALE THREAD



MALE UNION



FEMALE UNION



MALE THREADED TEE



FEMALE THREADED TEE



MALE ELBOW W/10



FEMALE ELBOW W/10

## • SPIRAL & CORRUGATED



COUPLER



90° ELBOW  
DOUBLE WALL



DOUBLE  
WALL TEE



DOUBLE WALL  
CROSS TEE



END CAP



BRANCH



RUBBER RING



SOLID WALL  
COUPLER



SPACER

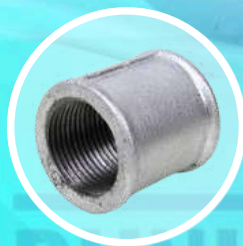


FLAP GATE

## • GALVANIZED FITTINGS



LONG BOCH



SOCKET



REDUCER  
TEE



90° KNEE



WATER MOOR



DOUBLE  
NIPPLE



45° KNEE



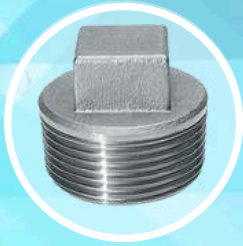
TEE



DOP



REDUCER  
SOCKET



**PLUG**



**REDUCER  
KNEE**



**CROSS**



**CLAMP  
SADDLE**

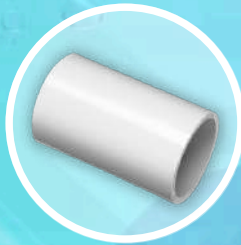


**VERLOCK**

## • CONDUIT FITTINGS



**MALE  
ADAPTOR**



**COUPLING**



**U STYLE  
CLAMP**



**CLAMP**



**FLEXIBLE  
COUPLING**



**WAY  
TERMINAL BOX**



**WAY  
ANGLE BOX**



**WAY  
THROUGH BOX**



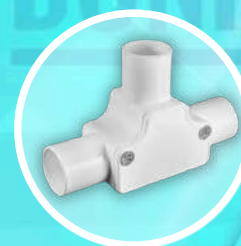
**WAY  
TEE BOX**



**WAY  
CROSS BOX**



**ELBOW  
WITH COVER**



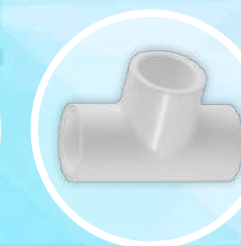
**TEE  
WITH COVER**



**90° ELBOW**



**90° LONG  
SWEEP BAND**



**TEE**



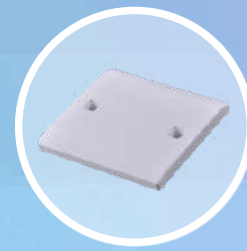
**GANG BOX  
(SURFACE  
INSTALLATION)**



**DEEP GANG BOX  
(CONCEALED  
INSTALLATION)**



**GANG BOX  
(CONCEALED  
INSTALLATION)**



**GANG BOX  
COVER**



**BENDING  
SPRING**

## • VALVE



**RESSILIANT  
GET VALVE**



**SINGLE AIR  
VALVE**



**DOUBLE AIR  
VALVE**



**SINGLE AIR  
VALVE**



**SINGLE AIR  
VALVE 1"**



**DOUBLE AIR  
VALVE  
WITH PISTON**



**RESSILIANT  
CHECK VALVE**



**DISMANTLING  
JOINT**



**BEND FLANGE**



**FLANGE  
SOCKET**



**WAFER CHECK  
VALVE**



**FLANGE  
ADAPTOR**



**METAL SEATED  
GATE VALVE**



**GLOBE  
VALVE**



**BOX STREET**



**BUTTERFLY VALVE**



**GATE VALVE**



**SWING CHECK VALVE**



**BUTTERFLY VALVE GEAR**



**BUTTERFLY VALVE DOUBLE FLANGE**



**RESSILIAN PORTABLE WATER**



**DRESSER JOINT**



**TEE ALL FLANGE**



**GATE VALVE CI (RISING SYSTEM)**



**GREY CI GATE VALVE**



**Y-STRAINER CI**



**SWING CHECK VALVE CI**



**GATE VALVE CI (NON RISING SYSTEM)**



**GLOBE VALVE CI**



**CHECK VALVE CI**

• **BRASS VALVE**



**CHECK VALVE**



**BALL VALVE**



**ZINC BIBCOCK**



**TUSEN KLEP**



**FILTER**



**BRASS TUSEN KLEP**



**GATE VALVE**



**BRASS BIBCOCK**



**PLUG KRANT**



**LOCKABLE ANGLE**



**LOCKABLE ANGLE MAGNETIC**



**LOCKABLE STRAIGHT MAGNETIC**



**LOCKABLE ANGLE COMPRESS MAGNETIC**



**LOCKABLE STRAIGHT COMPRESS**



**LOCKABLE STRAIGHT COMPRESS MAGNETIC**



**MALE X FEMALE BALL VALVE**



**LOCKABLE STRAIGHT MAGNETING COUPLING**

**• BOLT & NUT**



**A325**



**BAUT L 88/10.9/12.9**



**OMEGA CLAMP**



**ANCHOR BOLT**



**BUTTON HEAD**



**BML**



**CLAMP  
SLING**



**CLAMP  
SELANG**



**DRESSER  
JOINT LONG**



**BM SuS  
304/316**



**EYE NUT**



**EYE BOLT**



**FISCHER**



**WAFFER HEAD**



**CARBON STEEL  
HOT DIP**



**HANGER  
CLAMP**



**JF**



**JP**



**VERSING  
L SuS**



**STUDBOLT B7 C/W  
2 NUTS 2H  
CADMIUM**



**STUDBOLT B7 C/W  
2 NUTS 2H  
FLUORO CARBON  
COATED**



**CENTER/  
U-BOLT**



**CLAMP  
KNALPOT**



**RING PLAT**



**RING PER**





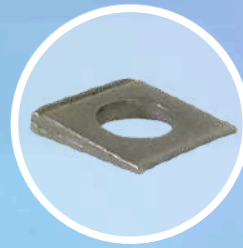
RIVET



ROOFING  
BAJA RINGAN



CB BOLT



TAPER WASHER



U BOLT  
CARBON STEEL

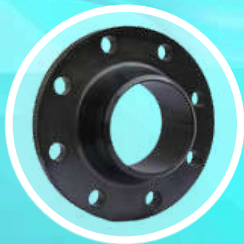


UNC BOLT



VERSING MIN

## • FLANGE CARBON STEEL & STAINLESS STEEL



WELD NECK  
CARBON STEEL



BLIND  
CARBON STEEL



SLIP ON  
CARBON STEEL



SOCKET WELD  
CARBON STEEL



FLANGE



WELD NECK  
STAINLESS STEEL



BLIND  
STAINLESS STEEL



SLIP ON  
STAINLESS STEEL

• **FORGED FITTINGS - STAINLESS STEEL 304/L**

---



90° ELBOW



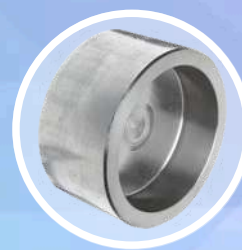
45° ELBOW



TEE



UNION



CAP



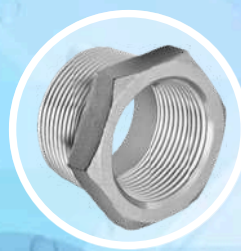
COUPLING



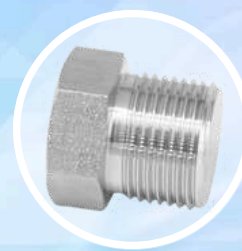
HALF  
COUPLING



HEX  
NIPPLE



HEX  
BUSHING



HEX PLUG

• **FORGED FITTINGS - STAINLESS STEEL 316/L**

---



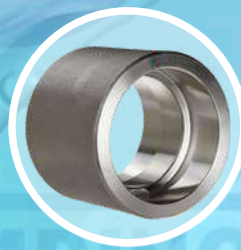
90° ELBOW



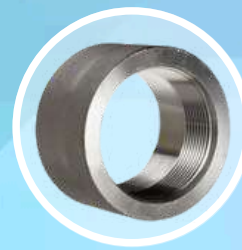
45° ELBOW



TEE



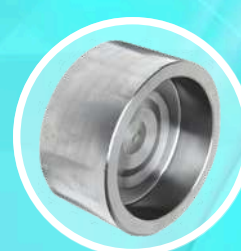
COUPLING



HALF  
COUPLING



UNION



CAP



HEX  
NIPPLE



HEX  
BLUSHING

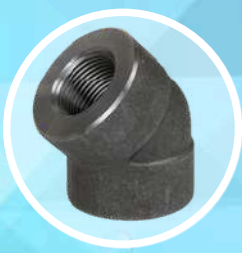


HEX PLUG

• **FORGED FITTINGS - CARBON STEEL**



**90° ELBOW**



**45° ELBOW**



**TEE**



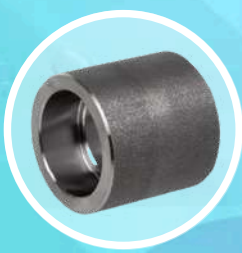
**REDUCER TEE**



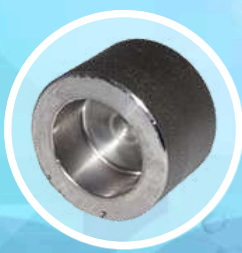
**UNION**



**COUPLING**



**HALF  
COUPLING**



**CAP**



**HEX  
NIPPLE**



**HEX  
BLUSHING**

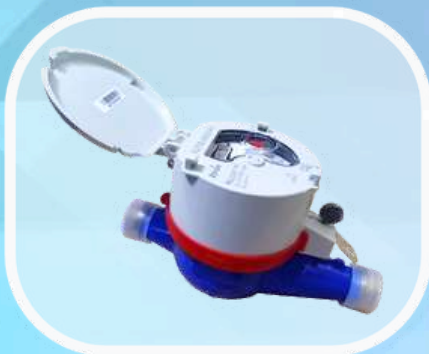


**HEX PLUG**

**DUNIAPLUMBING**

- **WATER METER - ITRON**

---



- **WATER METER - AMICO**

---



- **WATER METER - CALIBRATE**

---



- **WATER METER - NANKAI**

---



- **WATER METER - SENSUS**



- **WATER METER - OPX & AMINB**



- **WATER METER - ONDA**

---



- **WATER METER - B & R**

---



- **WATER METER - IMD**

---

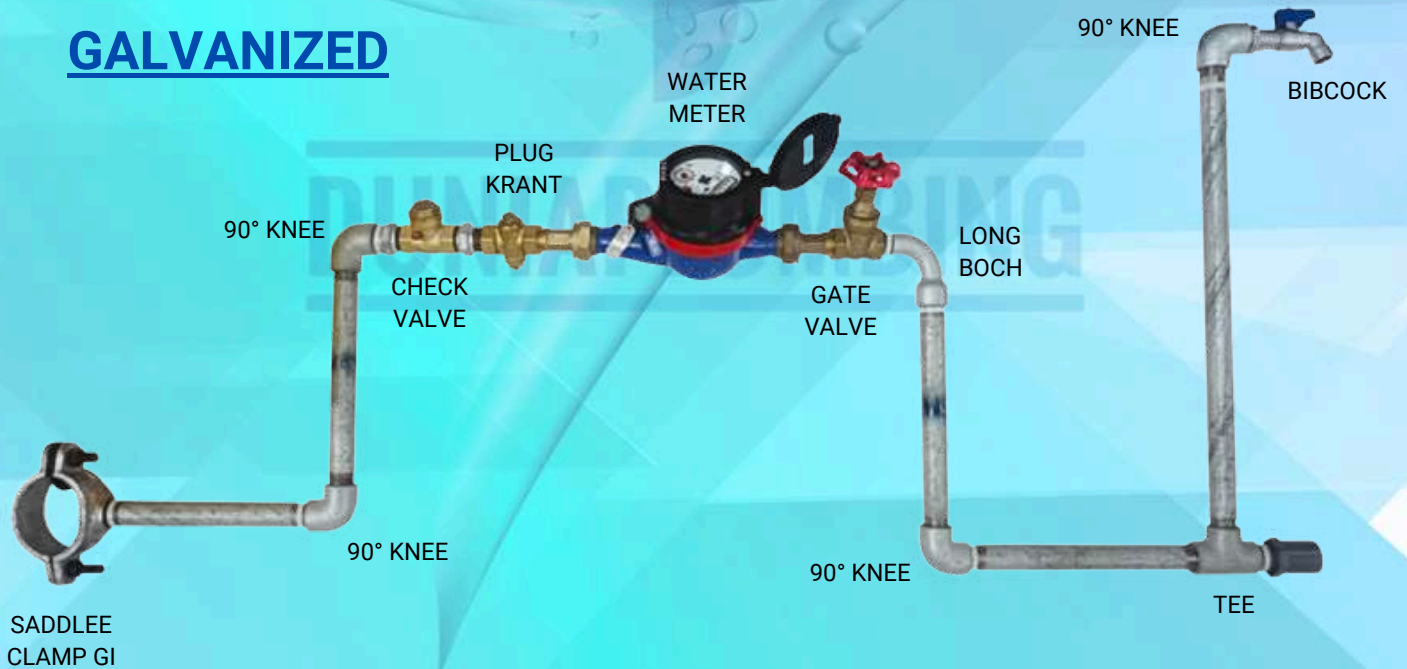


• **HOUSE CONNECTION**

**HDPE**



**GALVANIZED**





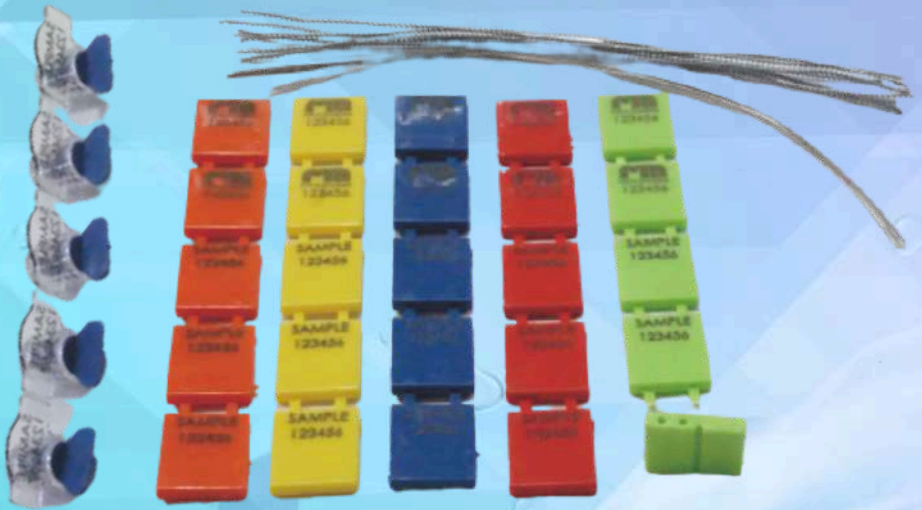
• **ACCESSORIES**



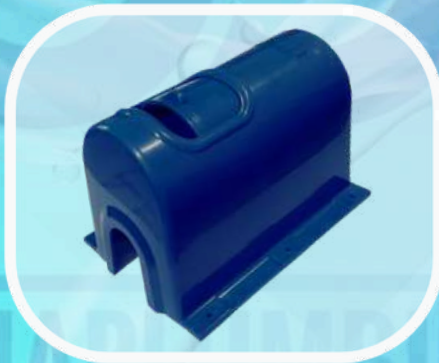
**SEAL TAPE**



**PRESSURE GAUGH**



**SEAL WIRE**



**BOX METER  
(SLIDE SYSTEM)**

**BOX METER  
(LOCK SYSTEM)**



## • WELDING MACHINE - MANUAL SERIES



### TYPE

1. SHDS 160 T A2
2. SHDS 200 T A2
3. SHDS 160 T A4
4. SHDS 200 T A4
5. SHDS 160 Y A2
6. SHDS 200 Y A2
7. SHDS 250 Y A2
8. SHDS 160 Y A4
9. SHDS 200 Y A4
10. SHDS 250 Y A4
11. SHDS 160 L A2
12. SHDS 200 L A2
13. SHDS 250 L A2
14. SHDS 160 L A4
15. SHDS 200 L A4
16. SHDS 250 L A4

## • WELDING MACHINE - HYDRAULIC SERIES



### TYPE

1. SHD 160
2. SHD 200
3. SHD 250
4. SHD 315
5. SHD 355
6. SHD 450
7. SHD 500
8. SHD 630
9. SHD 800
10. SHD 1000
11. SHD 1200
12. SHD 1600

- **ELECTROFUSION WELDING MACHINE**



**TYPE**

1. EF 315
2. EF 500
3. EF 630

- **SOCKETFUSION WELDING MACHINE**



**TYPE**

1. SF 63
2. SF 110
3. SF 160
4. SF 160 TABLE TOP

# INSTALLASI

## • Project Air Bersih



## • Project Hydrant



## • Project Biogas



# INSTALLASI

- **Project Geomembrane & Geotextille**



- **Project Rockwool Pipe (Insulation Pipe)**







- **Sambungan Rumah (SR)**



## PROSES PENGIRIMAN





• **FIRE HYDRANT**



**HYDRANT VALVE**



**SIAMASE CONNECTION**



**FIRE HOSE CANVAS**



**FIRE HOSE PU**



**HOSE RACK**



**JET NOZZLE**



**NOZZLE GUN**



**HOSE REEL**



**HYDRANT BOX TYPE A**



**HYDRANT BOX TYPE B**



**HYDRANT BOX TYPE C**



**FIRE HOSE RUBBER**



**HYDRANT PILLAR ONE WAY**



**HYDRANT PILLAR TWO WAY RRJ**



**JOCKEY FIRE PUMP**



**BUZZER SIRINE**



**FIRE EXTINGUISHER**



**HEAD SPRINKLE**

- **FIRE HYDRANT**

**DIESEL  
PUMP**



**ELECTRRIC  
FIRE PUMP**

The **World of Plumbing**  
Complements Your Needs



**DUNIAPLUMBING**

**EXCELLINDO ADHI PRATAMA**

Jl. Hayam Wuruk Raya No. 11A Cibodas

Kota Tangerang, Banten 15138.

Telp. 021 5566 8582 Fax. 021 5566 4582